

**FSH**  
**Mouse Monoclonal antibody(Mab)**  
**Catalog # AD80165****Specification**

---

**FSH - Product info**

Application	<b>IHC-P</b>
Primary Accession	<a href="#">P23945</a>
Reactivity	<b>Human</b>
Host	<b>Mouse</b>
Clonality	<b>Monoclonal</b>
Calculated MW	<b>78238</b>

**FSH - Additional info**

Gene ID	<b>2492</b>
Gene Name	<b>FSHR</b>
<b>Other Names</b>	
Follicle-stimulating hormone receptor, FSH-R, Follitropin receptor, FSHR, LGR1	

**Dilution**

IHC-P~~Ready-to-use

**Storage**

Maintain refrigerated at 2-8°C

**Precautions****FSH Antibody is for research use only and not for use in diagnostic or therapeutic procedures.****FSH - Protein Information****Name** FSHR**Synonyms****Function****LGR1**

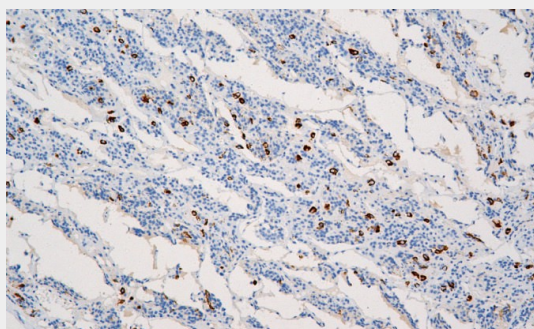
**G protein-coupled receptor for follitropin, the follicle-stimulating hormone (PubMed:[11847099](#), PubMed:[24058690](#), PubMed:[24692546](#)). Through cAMP production activates the downstream PI3K-AKT and ERK1/ERK2 signaling pathways (PubMed:[24058690](#)).**  
**Cell membrane; Multi-pass membrane protein**  
**Sertoli cells and ovarian granulosa cells.**

**Cellular Location****Tissue Location****FSH - Protocols**

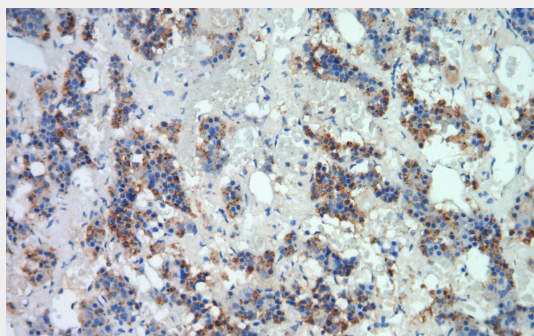
Provided below are standard protocols that you may find useful for product applications.

- [Western Blot](#)
- [Blocking Peptides](#)
- [Dot Blot](#)
- [Immunohistochemistry](#)
- [Immunofluorescence](#)
- [Immunoprecipitation](#)
- [Flow Cytometry](#)
- [Cell Culture](#)

#### **FSH - Images**



Hypophysis



Immunohistochemical analysis of paraffin-embedded human pituitary tissue using AD80165 performed on the Abcarta® FAIP-30 Fully automated IHC platform. Tissue was fixed with formaldehyde at room temperature, antigen retrieval was by heat mediation with a Citrate buffer (pH6.0). Samples were incubated with primary antibody (Ready-to-use) for 15 min at room temperature. AmpSee™ Detection Systems [Abcepta:AR005] was used as the secondary antibody.