

**CD10 Antibody**  
**Mouse Monoclonal Antibody (Mab)**  
**Catalog # AD80166****Specification**

---

**CD10 Antibody - Product info**

Application	IHC
Primary Accession	<a href="#">P08473</a>
Reactivity	Human
Host	Mouse
Clonality	Monoclonal
Isotype	IgG1
Calculated MW	85514

**CD10 Antibody - Additional info**

Gene ID	4311
Gene Name	MME

**Other Names**

Neprilysin, 3.4.24.11, Atriopeptidase, Common acute lymphocytic leukemia antigen, CALLA, Enkephalinase, Neutral endopeptidase 24.11, NEP, Neutral endopeptidase, Skin fibroblast elastase, SFE, CD10, MME, EPN

**Dilution**

IHC~~Ready-to-use

**Storage**

Maintain refrigerated at 2-8°C

**Precautions**

**CD10 Antibody is for research use only and not for use in diagnostic or therapeutic procedures.**

**CD10 Antibody - Protein Information**

**Name** MME {ECO:0000303|PubMed:27588448, ECO:0000312|HGNC:HGNC:7154}

Synonyms  
Function

**EPN**

Thermolysin-like specificity, but is almost confined on acting on polypeptides of up to 30 amino acids (PubMed:[15283675](#), PubMed:[8168535](#)). Biologically important in the destruction of opioid peptides such as Met- and Leu-enkephalins by cleavage of a Gly-Phe bond (PubMed:[17101991](#)). Able to cleave angiotensin-1, angiotensin-2 and angiotensin 1-9 (PubMed:[15283675](#)). Involved in the degradation of atrial natriuretic factor (ANF) (PubMed:[2531377](#),

Cellular Location

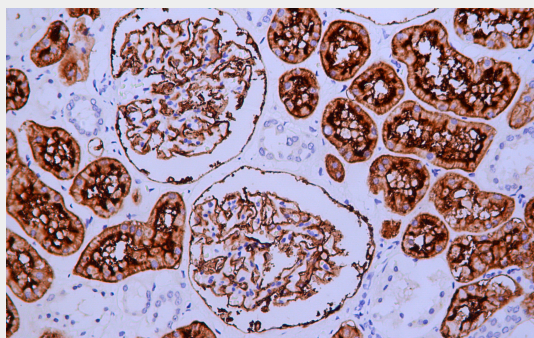
PubMed:[2972276](#)). Displays UV-inducible elastase activity toward skin preelastic and elastic fibers (PubMed:[20876573](#)).  
Cell membrane; Single-pass type II membrane protein

### CD10 Antibody - Protocols

Provided below are standard protocols that you may find useful for product applications.

- [Western Blot](#)
- [Blocking Peptides](#)
- [Dot Blot](#)
- [Immunohistochemistry](#)
- [Immunofluorescence](#)
- [Immunoprecipitation](#)
- [Flow Cytometry](#)
- [Cell Culture](#)

### CD10 Antibody - Images



Immunohistochemical analysis of paraffin-embedded human kidney tissue using AD80166 performed on the Abcarta® FAIP-30 Fully automated IHC platform. Tissue was fixed with formaldehyde at room temperature, antigen retrieval was by heat mediation with a EDTA buffer (pH9.0). Samples were incubated with primary antibody (Ready-to-use) for 15 min at room temperature. AmpSee™ Detection Systems [Abcepta:AR005] was used as the secondary antibody.