

PD-L1 Antibody
Rabbit Monoclonal Antibody (Mab)
Catalog # AD80167**Specification**

PD-L1 Antibody - Product info

Application	IHC
Primary Accession	O9NZQ7
Reactivity	Human
Host	Rabbit
Clonality	Monoclonal

PD-L1 Antibody - Additional info

Gene ID	29126
Gene Name	CD274 (HGNC:17635)

Other Names

Programmed cell death 1 ligand 1, PD-L1, PDCD1 ligand 1, Programmed death ligand 1, B7 homolog 1, B7-H1, CD274, CD274 (HGNC:17635)

Dilution

IHC~~Ready-to-use

Storage

Maintain refrigerated at 2-8°C

Precautions

PD-L1 Antibody is for research use only and not for use in diagnostic or therapeutic procedures.

PD-L1 Antibody - Protein Information

Name CD274 ([HGNC:17635](#))

Function

Plays a critical role in induction and maintenance of immune tolerance to self. As a ligand for the inhibitory receptor PDCD1/CD279, modulates the activation threshold of T-cells and limits T-cell effector response (PubMed:[11015443](#)). The PDCD1/CD279-mediated inhibitory pathway is exploited by tumors to attenuate anti-tumor immunity and facilitate tumor survival (PubMed:[28813417](#), PubMed:[28813410](#)). Through a yet unknown activating receptor, may costimulate T-cell subsets that predominantly produce

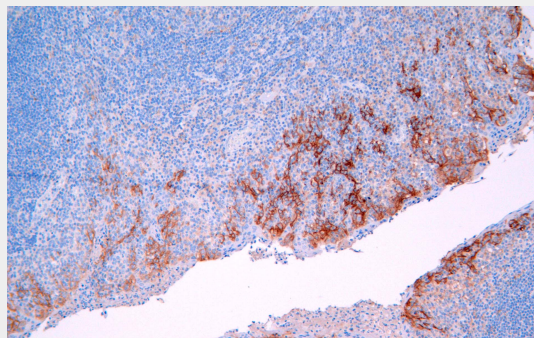
Cellular Location

interleukin-10 (IL10) (PubMed:[10581077](#)).
Cell membrane; Single-pass type I membrane protein. Early endosome membrane; Single-pass type I membrane protein. Recycling endosome membrane; Single-pass type I membrane protein. Note=Associates with CMTM6 at recycling endosomes, where it is protected from being targeted for lysosomal degradation. Isoform 2: Endomembrane system; Single-pass type I membrane protein
Highly expressed in the heart, skeletal muscle, placenta and lung. Weakly expressed in the thymus, spleen, kidney and liver. Expressed on activated T- and B-cells, dendritic cells, keratinocytes and monocytes.

Tissue Location**PD-L1 Antibody - Protocols**

Provided below are standard protocols that you may find useful for product applications.

- [Western Blot](#)
- [Blocking Peptides](#)
- [Dot Blot](#)
- [Immunohistochemistry](#)
- [Immunofluorescence](#)
- [Immunoprecipitation](#)
- [Flow Cytometry](#)
- [Cell Culture](#)

PD-L1 Antibody - Images

Immunohistochemical analysis of paraffin-embedded human tonsil tissue using AD80167 performed on the Abcarta® FAIP-30 Fully automated IHC platform. Tissue was fixed with formaldehyde at room temperature, antigen retrieval was by heat mediation with a EDTA buffer (pH9.0). Samples were incubated with primary antibody (Ready-to-use) for 15 min at room temperature. AmpSee™ Detection Systems [Abcepta:AR005] was used as the secondary antibody.