

Neurofilament
Rabbit Monoclonal antibody(Mab)
Catalog # AD80186**Specification**

Neurofilament - Product info

| | |
|-------------------|------------------------|
| Application | IHC-P |
| Primary Accession | P07197 |
| Reactivity | Human |
| Host | Rabbit |
| Clonality | Monoclonal |
| Calculated MW | 102472 |

Neurofilament - Additional info**Other Names**

Neurofilament medium polypeptide, NF-M, 160 kDa neurofilament protein, Neurofilament 3, Neurofilament triplet M protein, NEFM, NEF3, NFM

Dilution

IHC-P~~Ready-to-use

Storage

Maintain refrigerated at 2-8°C

Precautions

Neurofilament Antibody is for research use only and not for use in diagnostic or therapeutic procedures.

Neurofilament - Protein Information

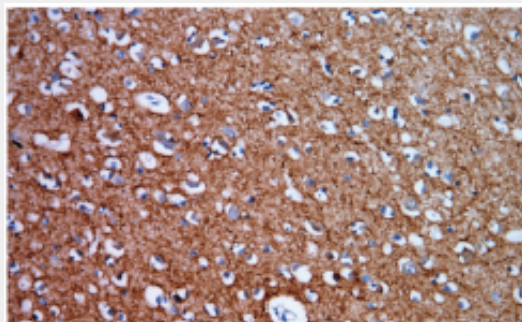
Name NEFM

Neurofilament - Protocols

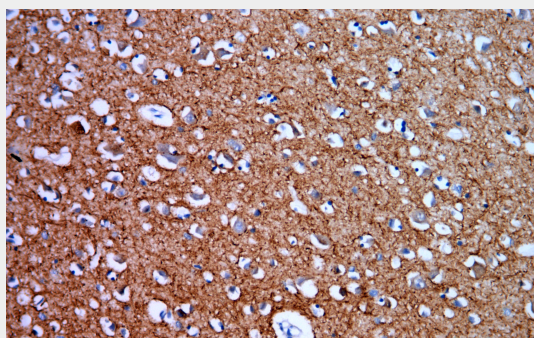
Provided below are standard protocols that you may find useful for product applications.

- [Western Blot](#)
- [Blocking Peptides](#)
- [Dot Blot](#)
- [Immunohistochemistry](#)
- [Immunofluorescence](#)
- [Immunoprecipitation](#)
- [Flow Cytometry](#)
- [Cell Culture](#)

Neurofilament - Images



Brain tissue



Immunohistochemical analysis of paraffin-embedded human brain tissue using AD80186 performed on the Abcarta® FAIP-30 Fully automated IHC platform. Tissue was fixed with formaldehyde at room temperature, antigen retrieval was by heat mediation with a Citrate buffer (pH6.0). Samples were incubated with primary antibody (Ready-to-use) for 15 min at room temperature. AmpSee™ Detection Systems [Abcepta:AR005] was used as the secondary antibody.