

**Galectin-3**  
**Rabbit Monoclonal antibody(Mab)**  
**Catalog # AD80187****Specification**

---

**Galectin-3 - Product info**

Application	<b>IHC-P</b>
Primary Accession	<a href="#">P17931</a>
Reactivity	<b>Human</b>
Host	<b>Rabbit</b>
Clonality	<b>Monoclonal</b>
Calculated MW	<b>26152</b>

**Galectin-3 - Additional info**

Gene ID	<b>3958</b>
Gene Name	<b>LGALS3</b>

**Other Names**

Galectin-3, Gal-3, 35 kDa lectin, Carbohydrate-binding protein 35, CBP 35, Galactose-specific lectin 3, Galactoside-binding protein, GALBP, IgE-binding protein, L-31, Laminin-binding protein, Lectin L-29, Mac-2 antigen, LGALS3 ([http://www.genenames.org/cgi-bin/gene\\_symbol\\_report?hgnc\\_id=6563](http://www.genenames.org/cgi-bin/gene_symbol_report?hgnc_id=6563)), MAC2

**Dilution**

IHC-P~~Ready-to-use

**Storage**

Maintain refrigerated at 2-8°C

**Precautions**

**Galectin-3 Antibody is for research use only and not for use in diagnostic or therapeutic procedures.**

**Galectin-3 - Protein Information**

**Name** LGALS3 ([HGNC:6563](#))

**Synonyms**  
**Function**

**MAC2**  
Galactose-specific lectin which binds IgE. May mediate with the alpha-3, beta-1 integrin the stimulation by CSPG4 of endothelial cells migration. Together with DMBT1, required for terminal differentiation of columnar epithelial cells during early embryogenesis (By similarity). In the nucleus: acts as a pre-mRNA splicing factor. Involved in acute inflammatory responses including neutrophil activation

Cellular Location

Tissue Location

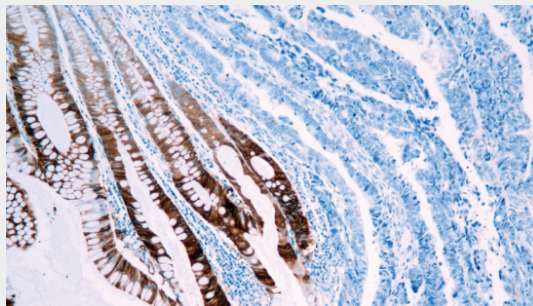
and adhesion, chemoattraction of monocytes macrophages, opsonization of apoptotic neutrophils, and activation of mast cells. Together with TRIM16, coordinates the recognition of membrane damage with mobilization of the core autophagy regulators ATG16L1 and BECN1 in response to damaged endomembranes. Cytoplasm. Nucleus. Secreted. Note=Secreted by a non-classical secretory pathway and associates with the cell surface  
A major expression is found in the colonic epithelium. It is also abundant in the activated macrophages Expressed in fetal membranes.

### Galectin-3 - Protocols

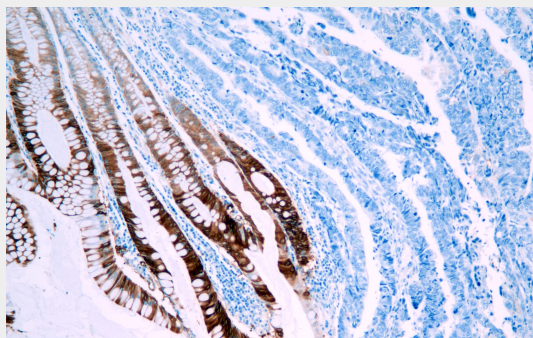
Provided below are standard protocols that you may find useful for product applications.

- [Western Blot](#)
- [Blocking Peptides](#)
- [Dot Blot](#)
- [Immunohistochemistry](#)
- [Immunofluorescence](#)
- [Immunoprecipitation](#)
- [Flow Cytometry](#)
- [Cell Culture](#)

### Galectin-3 - Images



Colon cancer



Immunohistochemical analysis of paraffin-embedded colorectal carcinoma; tissue using AD80187 performed on the Abcarta® FAIP-30 Fully automated IHC platform. Tissue was fixed with formaldehyde at room temperature, antigen retrieval was by heat mediation with a EDTA buffer (pH9.0). Samples were incubated with primary antibody (Ready-to-use) for 15 min at room temperature. AmpSee™ Detection Systems [Abcepta:AR005] was used as the secondary antibody.