

**SATB2**  
**Rabbit Monoclonal antibody(Mab)**  
**Catalog # AD80202****Specification**

---

**SATB2 - Product info**

Application	IHC-P
Primary Accession	<a href="#">Q9UPW6</a>
Reactivity	Human
Host	Rabbit
Clonality	Monoclonal
Calculated MW	82555

**SATB2 - Additional info**

Gene ID	23314
Gene Name	SATB2

**Other Names**

DNA-binding protein SATB2, Special AT-rich sequence-binding protein 2, SATB2, KIAA1034

**Dilution**

IHC-P~~Ready-to-use

**Storage**

Maintain refrigerated at 2-8°C

**Precautions**

**SATB2 Antibody is for research use only and not for use in diagnostic or therapeutic procedures.**

**SATB2 - Protein Information****Name SATB2**

Synonyms  
Function

**KIAA1034**  
**Binds to DNA, at nuclear matrix- or scaffold-associated regions. Thought to recognize the sugar-phosphate structure of double-stranded DNA. Transcription factor controlling nuclear gene expression, by binding to matrix attachment regions (MARs) of DNA and inducing a local chromatin-loop remodeling. Acts as a docking site for several chromatin remodeling enzymes and also by recruiting corepressors (HDACs) or coactivators (HATs) directly to promoters and enhancers. Required for the initiation of the upper- layer neurons (UL1) specific**

genetic program and for the inactivation of deep-layer neurons (DL) and UL2 specific genes, probably by modulating BCL11B expression. Repressor of CtIp2 and regulatory determinant of corticocortical connections in the developing cerebral cortex. May play an important role in palate formation. Acts as a molecular node in a transcriptional network regulating skeletal development and osteoblast differentiation.

Cellular Location

Nucleus matrix {ECO:0000255|PROSITE-ProRule:PRU00108, ECO:0000255|PROSITE-ProRule:PRU00374, ECO:0000269|PubMed:14701874}

Tissue Location

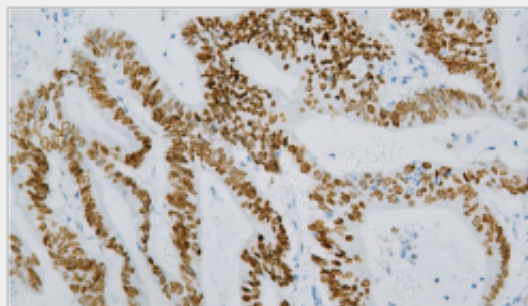
High expression in adult brain, moderate expression in fetal brain, and weak expression in adult liver, kidney, and spinal cord and in select brain regions, including amygdala, corpus callosum, caudate nucleus, and hippocampus

## SATB2 - Protocols

Provided below are standard protocols that you may find useful for product applications.

- [Western Blot](#)
- [Blocking Peptides](#)
- [Dot Blot](#)
- [Immunohistochemistry](#)
- [Immunofluorescence](#)
- [Immunoprecipitation](#)
- [Flow Cytometry](#)
- [Cell Culture](#)

## SATB2 - Images



Colon cancer