

STAT6
Rabbit Monoclonal antibody(Mab)
Catalog # AD80204**Specification**

STAT6 - Product info

Application	IHC-P
Primary Accession	P42226
Reactivity	Human
Host	Rabbit
Clonality	Monoclonal
Calculated MW	94135

STAT6 - Additional info

Gene ID	6778
Gene Name	STAT6
Other Names	
Signal transducer and activator of transcription 6, IL-4 Stat, STAT6	

Dilution

IHC-P~~Ready-to-use

Storage

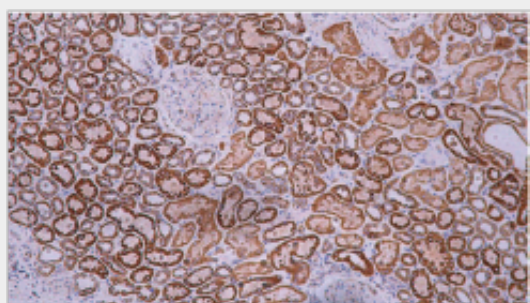
Maintain refrigerated at 2-8°C

Precautions**STAT6 Antibody is for research use only and not for use in diagnostic or therapeutic procedures.****STAT6 - Protein Information****Name** STAT6**Function****Carries out a dual function: signal transduction and activation of transcription. Involved in IL4/interleukin-4- and IL3/interleukin-3-mediated signaling. Cytoplasm. Nucleus. Note=Translocated into the nucleus in response to phosphorylation****Cellular Location****STAT6 - Protocols**

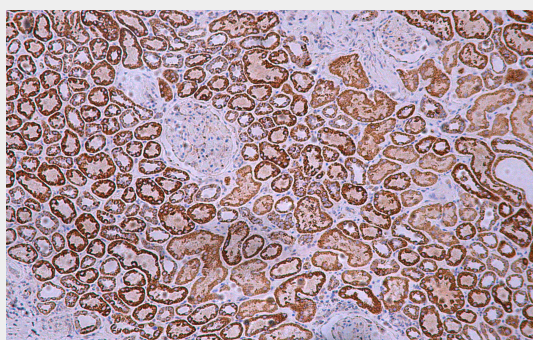
Provided below are standard protocols that you may find useful for product applications.

- [Western Blot](#)
- [Blocking Peptides](#)

- [Dot Blot](#)
- [Immunohistochemistry](#)
- [Immunofluorescence](#)
- [Immunoprecipitation](#)
- [Flow Cytometry](#)
- [Cell Culture](#)

STAT6 - Images

Kidney



Immunohistochemical analysis of paraffin-embedded colorectal carcinoma; tissue using AD80280 performed on the Abcarta® FAIP-30 Fully automated IHC platform. Tissue was fixed with formaldehyde at room temperature, antigen retrieval was by heat mediation with a Citrate buffer (pH6. 0). Samples were incubated with primary antibody(Ready-to-use) for 15 min at room temperature. AmpSee™ Detection Systems [Abcepta:AR005] was used as the secondary antibody.