

**CD20 Antibody**  
**Mouse Monoclonal Antibody (Mab)**  
**Catalog # AD80206****Specification**

---

**CD20 Antibody - Product info**

Application	IHC
Primary Accession	<a href="#">P11836</a>
Reactivity	Human
Host	Mouse
Clonality	Monoclonal
Calculated MW	33077

**CD20 Antibody - Additional info**

Gene ID	931
Gene Name	MS4A1

**Other Names**

B-lymphocyte antigen CD20, B-lymphocyte surface antigen B1, Bp35, Leukocyte surface antigen Leu-16, Membrane-spanning 4-domains subfamily A member 1, CD20, MS4A1, CD20

**Dilution**

IHC~~Ready-to-use

**Storage**

Maintain refrigerated at 2-8°C

**Precautions**

**CD20 Antibody is for research use only and not for use in diagnostic or therapeutic procedures.**

**CD20 Antibody - Protein Information**

**Name** MS4A1

**Synonyms**

**Function**

**CD20**

**This protein may be involved in the regulation of B-cell activation and proliferation.**

**Cellular Location**

**Cell membrane; Multi-pass membrane protein. Cell membrane; Lipid-anchor Expressed on B-cells.**

**Tissue Location**

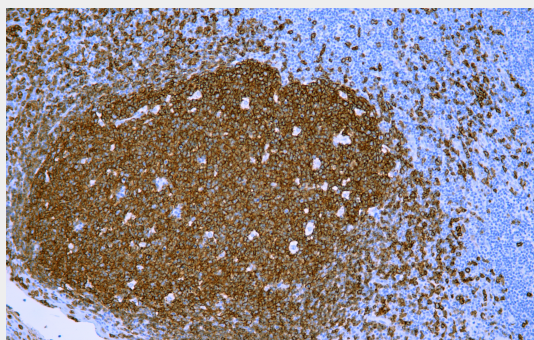
**CD20 Antibody - Protocols**

Provided below are standard protocols that you may find useful for product applications.

- [Western Blot](#)

- [Blocking Peptides](#)
- [Dot Blot](#)
- [Immunohistochemistry](#)
- [Immunofluorescence](#)
- [Immunoprecipitation](#)
- [Flow Cytometry](#)
- [Cell Culture](#)

#### **CD20 Antibody - Images**



Immunohistochemical analysis of paraffin-embedded human tonsil tissue using AD80206 performed on the Abcarta® FAIP-30 Fully automated IHC platform. Tissue was fixed with formaldehyde at room temperature, antigen retrieval was by heat mediation with a Citrate buffer (pH6.0). Samples were incubated with primary antibody (Ready-to-use) for 15 min at room temperature. AmpSee™ Detection Systems [Abcepta:AR005] was used as the secondary antibody.