

Villin
Rabbit Monoclonal antibody(Mab)
Catalog # AD80209

Specification

Villin - Product info

Application	IHC-P
Primary Accession	P09327
Reactivity	Human
Host	Rabbit
Clonality	Monoclonal
Calculated MW	92695

Villin - Additional info

Gene ID	7429
Gene Name	VIL1
Other Names	
Villin-1, VIL1, VIL	

Dilution

IHC-P~~Ready-to-use

Storage

Maintain refrigerated at 2-8°C

Precautions

Villin Antibody is for research use only and not for use in diagnostic or therapeutic procedures.

Villin - Protein Information

Name VIL1

Synonyms
Function

VIL

Epithelial cell-specific Ca(2+)-regulated actin- modifying protein that modulates the reorganization of microvillar actin filaments. Plays a role in the actin nucleation, actin filament bundle assembly, actin filament capping and severing. Binds phosphatidylinositol 4,5-bisphosphate (PIP2) and lysophosphatidic acid (LPA); binds LPA with higher affinity than PIP2. Binding to LPA increases its phosphorylation by SRC and inhibits all actin-modifying activities. Binding to PIP2 inhibits actin-capping and -severing activities but enhances

Cellular Location

actin-bundling activity. Regulates the intestinal epithelial cell morphology, cell invasion, cell migration and apoptosis. Protects against apoptosis induced by dextran sodium sulfate (DSS) in the gastrointestinal epithelium. Appears to regulate cell death by maintaining mitochondrial integrity. Enhances hepatocyte growth factor (HGF)-induced epithelial cell motility, chemotaxis and wound repair. Upon *S.flexneri* cell infection, its actin-severing activity enhances actin-based motility of the bacteria and plays a role during the dissemination.

Cytoplasm, cytoskeleton. Cell projection, lamellipodium. Cell projection, ruffle. Cell projection, microvillus. Cell projection, filopodium tip. Cell projection, filopodium. Note=Relocalized in the tip of cellular protrusions and filipodial extensions upon infection with *S.flexneri* in primary intestinal epithelial cells (IEC) and in the tail-like structures forming the actin comets of *S.flexneri*. Redistributed to the leading edge of hepatocyte growth factor (HGF)-induced lamellipodia (By similarity). Rapidly redistributed to ruffles and lamellipodia structures in response to autotaxin, lysophosphatidic acid (LPA) and epidermal growth factor (EGF) treatment. Specifically expressed in epithelial cells. Major component of microvilli of intestinal epithelial cells and kidney proximal tubule cells. Expressed in canalicular microvilli of hepatocytes (at protein level).

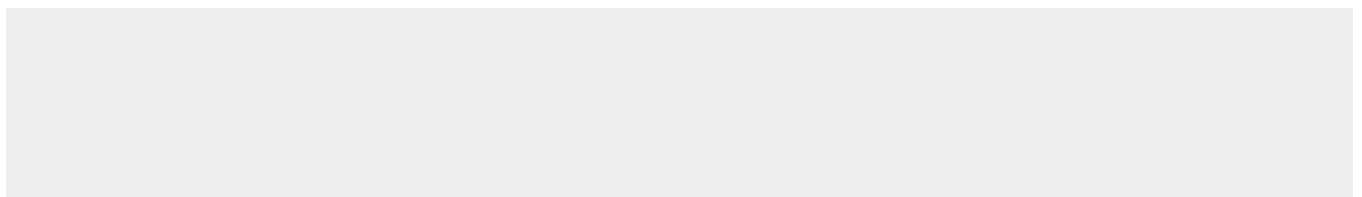
Tissue Location

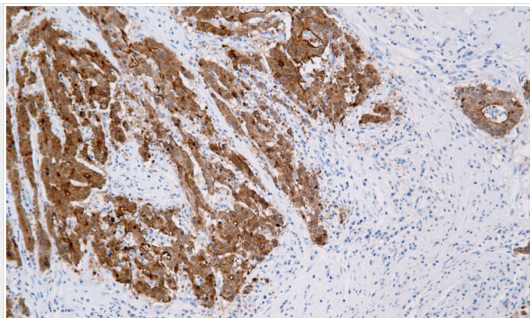
Villin - Protocols

Provided below are standard protocols that you may find useful for product applications.

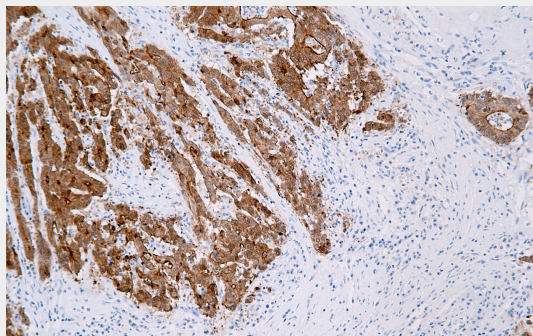
- [Western Blot](#)
- [Blocking Peptides](#)
- [Dot Blot](#)
- [Immunohistochemistry](#)
- [Immunofluorescence](#)
- [Immunoprecipitation](#)
- [Flow Cytometry](#)
- [Cell Culture](#)

Villin - Images





Colon cancer



Immunohistochemical analysis of paraffin-embedded colorectal carcinoma; tissue using AD80304 performed on the Abcarta® FAIP-30 Fully automated IHC platform. Tissue was fixed with formaldehyde at room temperature, antigen retrieval was by heat mediation with a EDTA buffer (pH9. 0). Samples were incubated with primary antibody(Ready-to-use) for 15 min at room temperature. AmpSee™ Detection Systems□Abcepta:AR005□ was used as the secondary antibody.