

CD56
Mouse Monoclonal antibody(Mab)
Catalog # AD80211**Specification**

CD56 - Product info

Application	IHC-P
Primary Accession	P13591
Reactivity	Human
Host	Mouse
Clonality	Monoclonal
Calculated MW	94574

CD56 - Additional info

Gene ID	4684
Gene Name	NCAM1
Other Names	
Neural cell adhesion molecule 1, N-CAM-1, NCAM-1, CD56, NCAM1, NCAM	

Dilution

IHC-P~~Ready-to-use

Storage

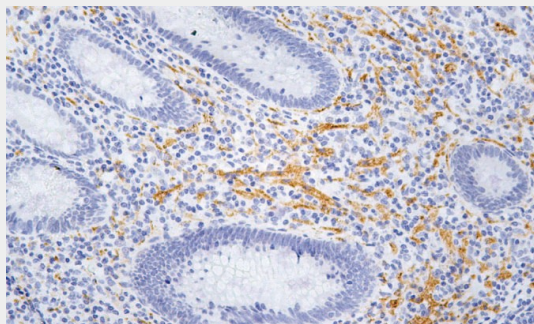
Maintain refrigerated at 2-8°C

Precautions**CD56 Antibody is for research use only and not for use in diagnostic or therapeutic procedures.****CD56 - Protein Information****Name** NCAM1 ([HGNC:7656](#))**Synonyms****Function****NCAM****This protein is a cell adhesion molecule involved in neuron-neuron adhesion, neurite fasciculation, outgrowth of neurites, etc.****Cellular Location****Isoform 1: Cell membrane; Single-pass type I membrane protein Isoform 3: Cell membrane; Lipid-anchor, GPI- anchor Isoform 5: Secreted.****CD56 - Protocols**

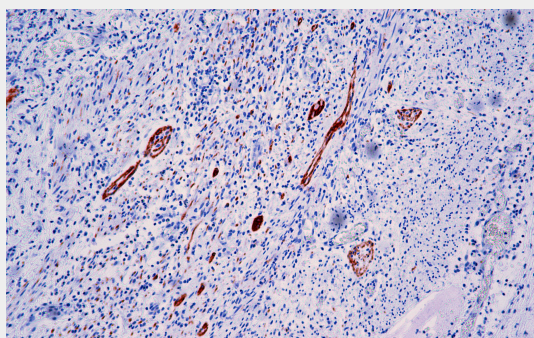
Provided below are standard protocols that you may find useful for product applications.

- [Western Blot](#)
- [Blocking Peptides](#)
- [Dot Blot](#)
- [Immunohistochemistry](#)
- [Immunofluorescence](#)
- [Immunoprecipitation](#)
- [Flow Cytometry](#)
- [Cell Culture](#)

CD56 - Images



Pancreas



Immunohistochemical analysis of paraffin-embedded vermiform appendix tissue using AD80211 performed on the Abcarta® FAIP-30 Fully automated IHC platform. Tissue was fixed with formaldehyde at room temperature, antigen retrieval was by heat mediation with a Citrate buffer (pH6.0). Samples were incubated with primary antibody (Ready-to-use) for 15 min at room temperature. AmpSee™ Detection Systems [Abcepta:AR005] was used as the secondary antibody.