

ERG
Rabbit Monoclonal antibody(Mab)
Catalog # AD80219

Specification

ERG - Product info

Application	IHC-P
Primary Accession	P11308
Reactivity	Human
Host	Rabbit
Clonality	Monoclonal
Calculated MW	53838

ERG - Additional info

Gene ID	2078
Gene Name	ERG
Other Names	
Transcriptional regulator ERG, Transforming protein ERG, ERG	

Dilution

IHC-P~~Ready-to-use

Storage

Maintain refrigerated at 2-8°C

Precautions

ERG Antibody is for research use only and not for use in diagnostic or therapeutic procedures.

ERG - Protein Information

Name ERG

Function

Transcriptional regulator. May participate in transcriptional regulation through the recruitment of SETDB1 histone methyltransferase and subsequent modification of local chromatin structure. Nucleus {ECO:0000255|PROSITE-ProRule:PRU00237, ECO:0000269|PubMed:17289661}. Cytoplasm. Note=Localized in cytoplasmic mRNP granules containing untranslated mRNAs

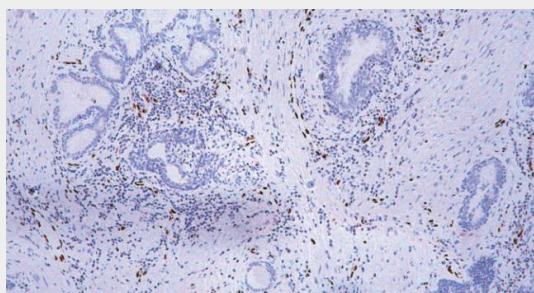
Cellular Location

ERG - Protocols

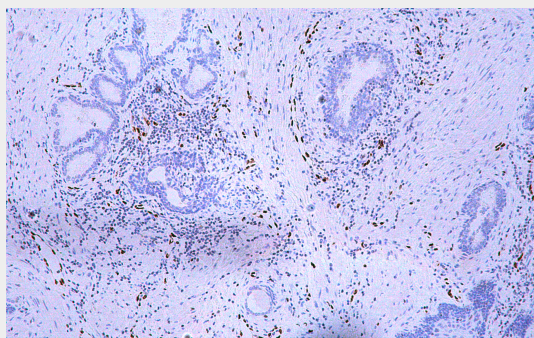
Provided below are standard protocols that you may find useful for product applications.

- [Western Blot](#)
- [Blocking Peptides](#)
- [Dot Blot](#)
- [Immunohistochemistry](#)
- [Immunofluorescence](#)
- [Immunoprecipitation](#)
- [Flow Cytometry](#)
- [Cell Culture](#)

ERG - Images



Prostate cancer



Immunohistochemical analysis of paraffin-embedded prostatic cancer tissue using AD80219 performed on the Abcarta® FAIP-30 Fully automated IHC platform. Tissue was fixed with formaldehyde at room temperature, antigen retrieval was by heat mediation with a EDTA buffer (pH9.0). Samples were incubated with primary antibody (Ready-to-use) for 15 min at room temperature. AmpSee™ Detection Systems [Abcepta:AR005] was used as the secondary antibody.