

**CD5**  
**Rabbit Monoclonal antibody(Mab)**  
**Catalog # AD80221****Specification**

---

**CD5 - Product info**

Application	<b>IHC-P</b>
Primary Accession	<a href="#">P06127</a>
Reactivity	<b>Human</b>
Host	<b>Rabbit</b>
Clonality	<b>Monoclonal</b>
Calculated MW	<b>54578</b>

**CD5 - Additional info**

Gene ID	<b>921</b>
Gene Name	<b>CD5</b>
<b>Other Names</b>	
T-cell surface glycoprotein CD5, Lymphocyte antigen T1/Leu-1, CD5, CD5, LEU1	

**Dilution**

IHC-P~~Ready-to-use

**Storage**

Maintain refrigerated at 2-8°C

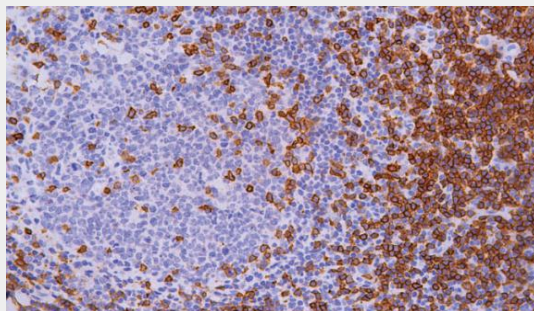
**Precautions****CD5 Antibody is for research use only and not for use in diagnostic or therapeutic procedures.****CD5 - Protein Information****Name** CD5**Synonyms****Function****Cellular Location****LEU1****May act as a receptor in regulating T-cell proliferation.****Cell membrane; Single-pass type I membrane protein****CD5 - Protocols**

Provided below are standard protocols that you may find useful for product applications.

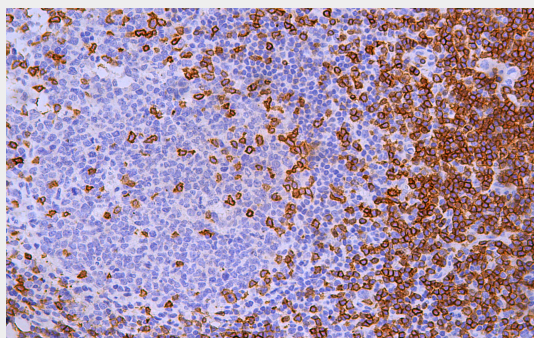
- [Western Blot](#)
- [Blocking Peptides](#)
- [Dot Blot](#)
- [Immunohistochemistry](#)

- [Immunofluorescence](#)
- [Immunoprecipitation](#)
- [Flow Cytometry](#)
- [Cell Culture](#)

## CD5 - Images



Tonsil



Immunohistochemical analysis of paraffin-embedded human tonsil tissue using AD80221 performed on the Abcarta® FAIP-30 Fully automated IHC platform. Tissue was fixed with formaldehyde at room temperature, antigen retrieval was by heat mediation with a EDTA buffer (pH9.0). Samples were incubated with primary antibody (Ready-to-use) for 15 min at room temperature. AmpSee™ Detection Systems [Abcepta:AR005] was used as the secondary antibody.