

CK6
Rabbit Monoclonal antibody(Mab)
Catalog # AD80226**Specification**

CK6 - Product info

Application	IHC-P, IHC
Primary Accession	P48668
Reactivity	Human
Host	Rabbit
Clonality	Monoclonal
Calculated MW	60025

CK6 - Additional info

Gene ID	286887
Gene Name	KRT6C

Other Names

Keratin, type II cytoskeletal 6C, Cytokeratin-6C, CK-6C, Cytokeratin-6E, CK-6E, Keratin K6h, Keratin-6C, K6C, Type-II keratin Kb12, KRT6C, KRT6E

Dilution

IHC-P~~Ready-to-use
IHC~~Ready-to-use

Storage	This product is stored at 2-110 °C, please use it within the expiration date.
Precautions	CK6 Antibody is for research use only and not for use in diagnostic or therapeutic procedures.

CK6 - Protein Information

Name KRT6C

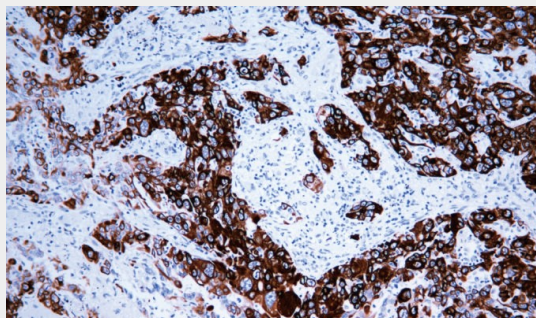
Synonyms	KRT6E
Tissue Location	Constitutively expressed in distinct types of epithelia such as those in oral mucosa, esophagus, papillae of tongue and hair follicle outer root sheath

CK6 - Protocols

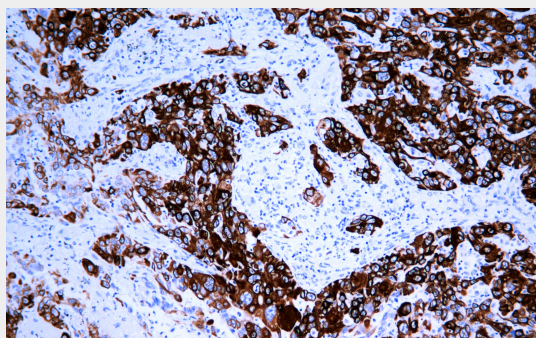
Provided below are standard protocols that you may find useful for product applications.

- [Western Blot](#)
- [Blocking Peptides](#)
- [Dot Blot](#)

- [Immunohistochemistry](#)
- [Immunofluorescence](#)
- [Immunoprecipitation](#)
- [Flow Cytometry](#)
- [Cell Culture](#)

CK6 - Images

Lung adenocarcinoma



Immunohistochemical analysis of paraffin-embedded human lung adenocarcinoma tissue using AD80226 performed on the Abcarta® FAIP-30 Fully automated IHC platform. Tissue was fixed with formaldehyde at room temperature, antigen retrieval was by heat mediation with a EDTA buffer (pH9.0). Samples were incubated with primary antibody (Ready-to-use) for 15 min at room temperature. AmpSee™ Detection Systems [Abcepta:AR005] was used as the secondary antibody.