

**Desmin Antibody**  
**Mouse Monoclonal Antibody (Mab)**  
**Catalog # AD80245****Specification**

---

**Desmin Antibody - Product info**

Application	IHC
Primary Accession	<a href="#">P17661</a>
Reactivity	Human
Host	Mouse
Clonality	Monoclonal
Isotype	IgG1

**Desmin Antibody - Additional info**

Gene ID	1674
Gene Name	DES
<b>Other Names</b>	
Desmin, DES	

**Dilution**

IHC~~Ready-to-use

**Storage**

Maintain refrigerated at 2-8°C

**Precautions****Desmin Antibody is for research use only and not for use in diagnostic or therapeutic procedures.****Desmin Antibody - Protein Information****Name** DES**Function****Muscle-specific type III intermediate filament essential for proper muscular structure and function. Plays a crucial role in maintaining the structure of sarcomeres, inter-connecting the Z-disks and forming the myofibrils, linking them not only to the sarcolemmal cytoskeleton, but also to the nucleus and mitochondria, thus providing strength for the muscle fiber during activity (PubMed:[25358400](#)). In adult striated muscle they form a fibrous network connecting myofibrils to each other and to the plasma membrane from the periphery of the Z-line structures (PubMed:[24200904](#), PubMed:[25394388](#),**

## Cellular Location

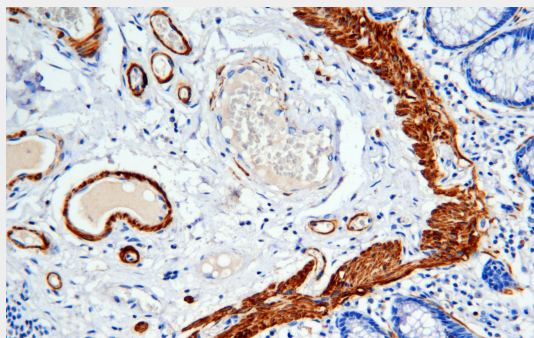
PubMed:[26724190](#)). May act as a sarcomeric microtubule-anchoring protein: specifically associates with detyrosinated tubulin-alpha chains, leading to buckled microtubules and mechanical resistance to contraction. Contributes to the transcriptional regulation of the NKX2-5 gene in cardiac progenitor cells during a short period of cardiomyogenesis and in cardiac side population stem cells in the adult. Plays a role in maintaining an optimal conformation of nebulin (NEB) on heart muscle sarcomeres to bind and recruit cardiac alpha-actin (By similarity). Cytoplasm, myofibril, sarcomere, Z line Cytoplasm. Cell membrane, sarcolemma. Nucleus {ECO:0000250|UniProtKB:P31001}. Note=Localizes in the intercalated disks which occur at the Z line of cardiomyocytes (PubMed:24200904, PubMed:26724190). Localizes in the nucleus exclusively in differentiating cardiac progenitor cells and premature cardiomyocytes (By similarity) {ECO:0000250|UniProtKB:P31001, ECO:0000269|PubMed:24200904, ECO:0000269|PubMed:26724190}

## Desmin Antibody - Protocols

Provided below are standard protocols that you may find useful for product applications.

- [Western Blot](#)
- [Blocking Peptides](#)
- [Dot Blot](#)
- [Immunohistochemistry](#)
- [Immunofluorescence](#)
- [Immunoprecipitation](#)
- [Flow Cytometry](#)
- [Cell Culture](#)

## Desmin Antibody - Images



Immunohistochemical analysis of paraffin-embedded colorectal carcinoma; tissue using AD80025

performed on the Abcarta® FAIP-30 Fully automated IHC platform. Tissue was fixed with formaldehyde at room temperature, antigen retrieval was by heat mediation with a Citrate buffer (pH 6.0). Samples were incubated with primary antibody (Ready-to-use) for 15 min at room temperature. AmpSee™ Detection Systems [Abcepta:AR005] was used as the secondary antibody.