

**Thyroid Stimulating Hormone Antibody**  
**Mouse Monoclonal Antibody (Mab)**  
**Catalog # AD80256****Specification**

---

**Thyroid Stimulating Hormone Antibody - Product info**

Application	IHC
Primary Accession	<a href="#">P01222</a>
Reactivity	Human
Host	Mouse
Clonality	Monoclonal
Isotype	IgG1
Calculated MW	15639

**Thyroid Stimulating Hormone Antibody - Additional info**

Gene ID	7252
Gene Name	TSHB

**Other Names**

Thyrotropin subunit beta, Thyroid-stimulating hormone subunit beta, TSH-B, TSH-beta, Thyrotropin beta chain, Thyrotropin alfa, TSHB

**Dilution**

IHC~~Ready-to-use

**Storage**

Maintain refrigerated at 2-8°C

**Precautions**

**Thyroid Stimulating Hormone Antibody is for research use only and not for use in diagnostic or therapeutic procedures.**

**Thyroid Stimulating Hormone Antibody - Protein Information****Name** TSHB**Function**

**Indispensable for the control of thyroid structure and metabolism.**

**Cellular Location**

**Secreted.**

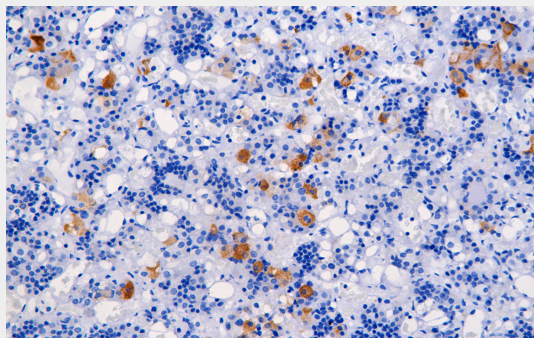
**Thyroid Stimulating Hormone Antibody - Protocols**

Provided below are standard protocols that you may find useful for product applications.

- [Western Blot](#)
- [Blocking Peptides](#)
- [Dot Blot](#)
- [Immunohistochemistry](#)

- [Immunofluorescence](#)
- [Immunoprecipitation](#)
- [Flow Cytometry](#)
- [Cell Culture](#)

### **Thyroid Stimulating Hormone Antibody - Images**



Immunohistochemical analysis of paraffin-embedded colorectal carcinoma; tissue using AD80290 performed on the Abcarta® FAIP-30 Fully automated IHC platform. Tissue was fixed with formaldehyde at room temperature, antigen retrieval was by heat mediation with a Citrate buffer (pH6. 0). Samples were incubated with primary antibody(Ready-to-use) for 15 min at room temperature. AmpSee™ Detection Systems□Abcepta:AR005□ was used as the secondary antibody.