

**FLI-1**  
**Mouse Monoclonal antibody(Mab)**  
**Catalog # AD80259****Specification**

---

**FLI-1 - Product info**

Application	<b>IHC-P</b>
Primary Accession	<a href="#">Q01543</a>
Reactivity	<b>Human</b>
Host	<b>Mouse</b>
Clonality	<b>Monoclonal</b>
Calculated MW	<b>50982</b>

**FLI-1 - Additional info**

Gene ID	<b>2313</b>
Gene Name	<b>FLI1</b>
<b>Other Names</b>	
Friend leukemia integration 1 transcription factor, Proto-oncogene Fli-1, Transcription factor ERGB, FLI1	

**Dilution**

IHC-P~~Ready-to-use

**Storage**

Maintain refrigerated at 2-8°C

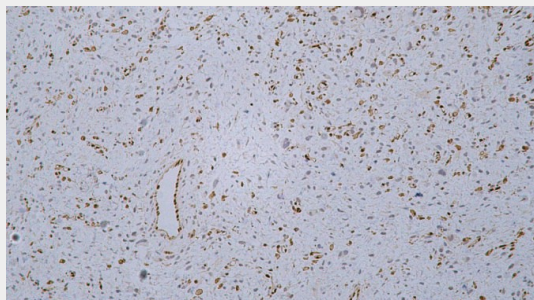
**Precautions****FLI-1 Antibody is for research use only and not for use in diagnostic or therapeutic procedures.****FLI-1 - Protein Information****Name** FLI1**Function****Sequence-specific transcriptional activator (PubMed:[24100448](#), PubMed:[26316623](#), PubMed:[28255014](#)). Recognizes the DNA sequence 5'-C[CA]GGAAGT-3'.  
**Nucleus.******Cellular Location****FLI-1 - Protocols**

Provided below are standard protocols that you may find useful for product applications.

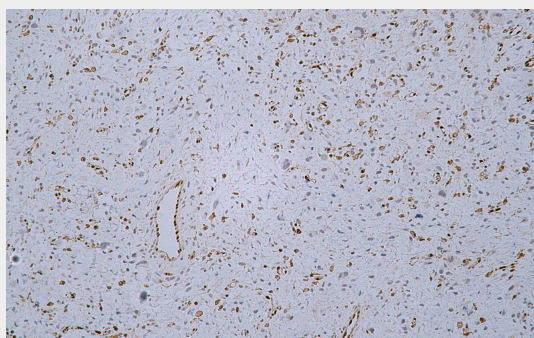
- [Western Blot](#)
- [Blocking Peptides](#)
- [Dot Blot](#)

- [Immunohistochemistry](#)
- [Immunofluorescence](#)
- [Immunoprecipitation](#)
- [Flow Cytometry](#)
- [Cell Culture](#)

## FLI-1 - Images



Ewings sarcoma



Immunohistochemical analysis of paraffin-embedded Ewing's sarcoma tissue using AD80259 performed on the Abcarta® FAIP-30 Fully automated IHC platform. Tissue was fixed with formaldehyde at room temperature, antigen retrieval was by heat mediation with a EDTA buffer (pH9.0). Samples were incubated with primary antibody (Ready-to-use) for 15 min at room temperature. AmpSee™ Detection Systems [Abcepta:AR005] was used as the secondary antibody.