

GCDFP-15
Rabbit Monoclonal antibody(Mab)
Catalog # AD80264**Specification**

GCDFP-15 - Product info

Application	IHC-P
Primary Accession	P12273
Reactivity	Human
Host	Rabbit
Clonality	Monoclonal
Calculated MW	16572

GCDFP-15 - Additional info

Gene ID	5304
Gene Name	PIP

Other Names

Prolactin-inducible protein, Gross cystic disease fluid protein 15, GCDFP-15, Prolactin-induced protein, Secretory actin-binding protein, SABP, gp17, PIP, GCDFP15, GPIP4

Dilution

IHC-P~~Ready-to-use

Storage

Maintain refrigerated at 2-8°C

Precautions

GCDFP-15 Antibody is for research use only and not for use in diagnostic or therapeutic procedures.

GCDFP-15 - Protein Information**Name** PIP**Synonyms****Cellular Location****Tissue Location****GCDFP15, GPIP4****Secreted.**

Expressed in pathological conditions of the mammary gland and in several exocrine tissues, such as the lacrimal, salivary, and sweat glands

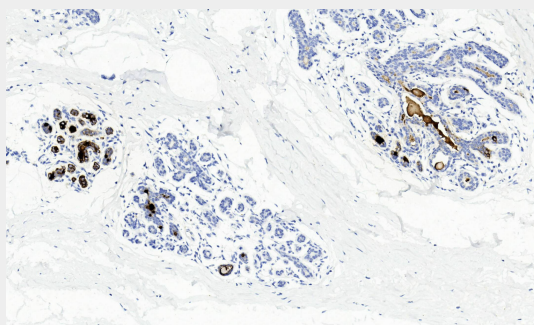
GCDFP-15 - Protocols

Provided below are standard protocols that you may find useful for product applications.

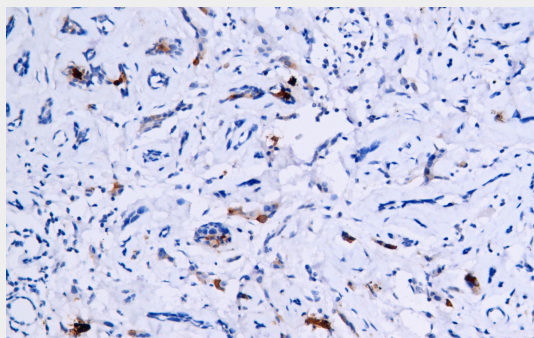
- [Western Blot](#)
- [Blocking Peptides](#)

- [Dot Blot](#)
- [Immunohistochemistry](#)
- [Immunofluorescence](#)
- [Immunoprecipitation](#)
- [Flow Cytometry](#)
- [Cell Culture](#)

GCDFP-15 - Images



Normal breast tissues



Immunohistochemical analysis of paraffin-embedded human normal breast tissue using AD80264 performed on the Abcarta® FAIP-30 Fully automated IHC platform. Tissue was fixed with formaldehyde at room temperature, antigen retrieval was by heat mediation with a Citrate buffer (pH6.0). Samples were incubated with primary antibody (Ready-to-use) for 15 min at room temperature. AmpSee™ Detection Systems [Abcepta:AR005] was used as the secondary antibody.