

HP
Rabbit Polyclonal antibody(Pab)
Catalog # AD80265

Specification

HP - Product info

Application
Primary Accession
Reactivity
Host
Clonality
Calculated MW

IHC-P
[P00738](#)
Human
Rabbit
Polyclonal
45205

HP - Additional info

Other Names

Haptoglobin, Zonulin, Haptoglobin alpha chain, Haptoglobin beta chain, HP

Dilution

IHC-P~~Ready-to-use

Storage

Maintain refrigerated at 2-8°C

Precautions

Helicobacter phlori Antibody is for research use only and not for use in diagnostic or therapeutic procedures.

HP - Protein Information

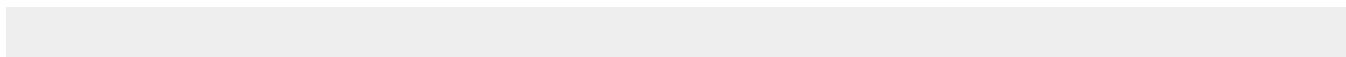
Name HP

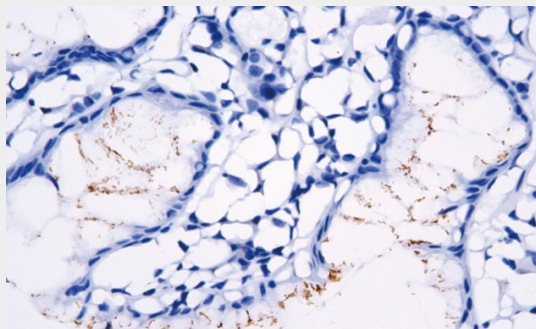
HP - Protocols

Provided below are standard protocols that you may find useful for product applications.

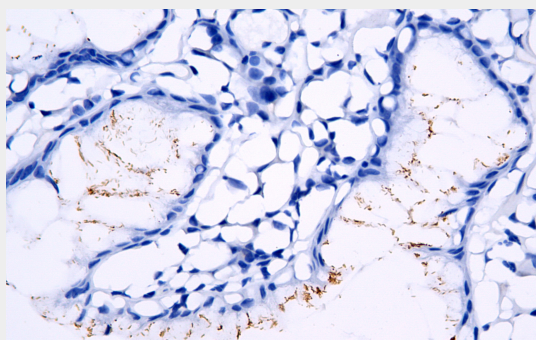
- [Western Blot](#)
- [Blocking Peptides](#)
- [Dot Blot](#)
- [Immunohistochemistry](#)
- [Immunofluorescence](#)
- [Immunoprecipitation](#)
- [Flow Cytometry](#)
- [Cell Culture](#)

HP - Images





Stomach



Immunohistochemical analysis of paraffin-embedded human stomach tissue using AD80265 performed on the Abcarta® FAIP-30 Fully automated IHC platform. Tissue was fixed with formaldehyde at room temperature, antigen retrieval was by heat mediation with a Citrate buffer (pH6. 0). Samples were incubated with primary antibody(Ready-to-use) for 15 min at room temperature. AmpSee™ Detection Systems□Abcepta:AR005□ was used as the secondary antibody.