

**C3c**  
**Mouse Monoclonal antibody(Mab)**  
**Catalog # AD80278****Specification**

---

**C3c - Product info**

Application	IHC-P
Primary Accession	<a href="#">P01024</a>
Reactivity	Human
Host	Mouse
Clonality	Monoclonal
Calculated MW	187148

**C3c - Additional info**

Gene ID	718
Gene Name	C3

**Other Names**

Complement C3, C3 and PZP-like alpha-2-macroglobulin domain-containing protein 1, Complement C3 beta chain, C3-beta-c, C3bc, Complement C3 alpha chain, C3a anaphylatoxin, Acylation stimulating protein, ASP, C3adesArg, Complement C3b alpha' chain, Complement C3c alpha' chain fragment 1, Complement C3dg fragment, Complement C3g fragment, Complement C3d fragment, Complement C3f fragment, Complement C3c alpha' chain fragment 2, C3, CPAMD1

**Dilution**

IHC-P~~Ready-to-use

**Storage**

Maintain refrigerated at 2-8°C

**Precautions**

**C3c Antibody is for research use only and not for use in diagnostic or therapeutic procedures.**

**C3c - Protein Information**

**Name** C3 {ECO:0000303|PubMed:2579379, ECO:0000312|HGNC:HGNC:1318}

Synonyms  
Function

**CPAMD1**  
**C3 plays a central role in the activation of the complement system. Its processing by C3 convertase is the central reaction in both classical and alternative complement pathways. After activation C3b can bind covalently, via its reactive thioester, to cell surface carbohydrates or immune aggregates. C3-beta-c: Acts as a chemoattractant for neutrophils in chronic inflammation.**

Cellular Location  
Tissue Location

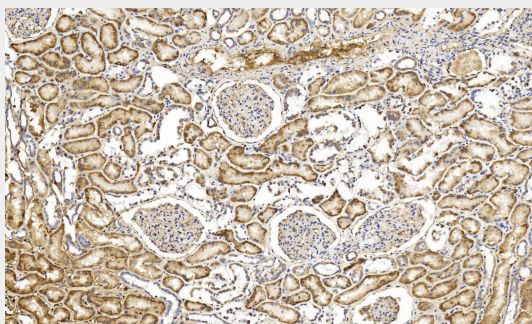
**Secreted.**  
**Plasma.** The acylation stimulating protein (ASP) is expressed in adipocytes and released into the plasma during both the fasting and postprandial periods

### C3c - Protocols

Provided below are standard protocols that you may find useful for product applications.

- [Western Blot](#)
- [Blocking Peptides](#)
- [Dot Blot](#)
- [Immunohistochemistry](#)
- [Immunofluorescence](#)
- [Immunoprecipitation](#)
- [Flow Cytometry](#)
- [Cell Culture](#)

### C3c - Images



Kidney