

**C4d**  
**Mouse Monoclonal antibody(Mab)**  
**Catalog # AD80279****Specification**

---

**C4d - Product info**

Application	IHC-P
Primary Accession	<a href="#">P0COL4</a>
Reactivity	Human
Host	Mouse
Clonality	Monoclonal
Calculated MW	192785

**C4d - Additional info**

Gene ID	720;721
Gene Name	C4A

**Other Names**

Complement C4-A, Acidic complement C4, C3 and PZP-like alpha-2-macroglobulin domain-containing protein 2, Complement C4 beta chain, Complement C4-A alpha chain, C4a anaphylatoxin, C4b-A, C4d-A, Complement C4 gamma chain, C4A, CO4, CPAMD2

**Dilution**

IHC-P~~Ready-to-use

**Storage**

Maintain refrigerated at 2-8°C

**Precautions**

**C4d Antibody is for research use only and not for use in diagnostic or therapeutic procedures.**

**C4d - Protein Information**

**Name** C4A {ECO:0000303|PubMed:6546707, ECO:0000312|HGNC:HGNC:1323}

**Synonyms****Function****CO4, CPAMD2**

**Non-enzymatic component of C3 and C5 convertases and thus essential for the propagation of the classical complement pathway. Covalently binds to immunoglobulins and immune complexes and enhances the solubilization of immune aggregates and the clearance of IC through CR1 on erythrocytes. C4A isotype is responsible for effective binding to form amide bonds with immune aggregates or protein antigens, while C4B isotype catalyzes the transacylation of the**

Cellular Location

Tissue Location

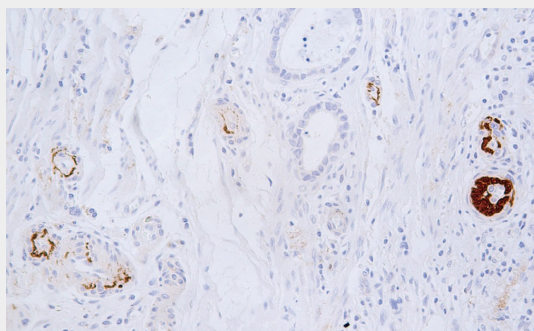
thioester carbonyl group to form ester bonds with carbohydrate antigens. Secreted. Cell junction, synapse. Cell projection, axon. Cell projection, dendrite  
Complement component C4 is expressed at highest levels in the liver, at moderate levels in the adrenal cortex, adrenal medulla, thyroid gland, and the kidney, and at lowest levels in the heart, ovary, small intestine, thymus, pancreas and spleen. The extra-hepatic sites of expression may be important for the local protection and inflammatory response

### C4d - Protocols

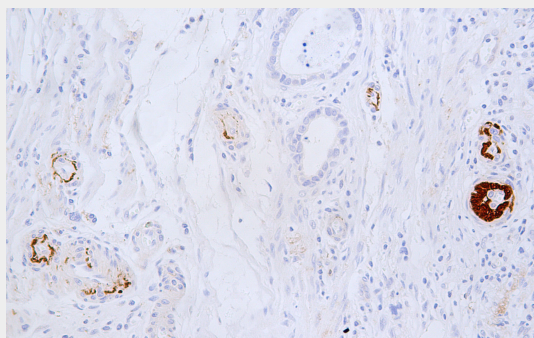
Provided below are standard protocols that you may find useful for product applications.

- [Western Blot](#)
- [Blocking Peptides](#)
- [Dot Blot](#)
- [Immunohistochemistry](#)
- [Immunofluorescence](#)
- [Immunoprecipitation](#)
- [Flow Cytometry](#)
- [Cell Culture](#)

### C4d - Images



Gastric adenocarcinoma.



Immunohistochemical analysis of paraffin-embedded gastric adenocarcinoma tissue using AD80279 performed on the Abcarta® FAIP-30 Fully automated IHC platform. Tissue was fixed with

formaldehyde at room temperature, antigen retrieval was by heat mediation with a Citrate buffer (pH6.0). Samples were incubated with primary antibody (Ready-to-use) for 15 min at room temperature. AmpSee™ Detection Systems [Abcepta:AR005] was used as the secondary antibody.