

**CD16****Mouse Monoclonal antibody(Mab)****Catalog # AD80281****Specification**

---

**CD16 - Product info**

Application	<b>IHC-P</b>
Primary Accession	<a href="#">P08637</a>
Reactivity	<b>Human</b>
Host	<b>Mouse</b>
Clonality	<b>Monoclonal</b>
Calculated MW	<b>29089</b>

**CD16 - Additional info**

Gene ID	<b>2214</b>
Gene Name	<b>FCGR3A</b>

**Other Names**

Low affinity immunoglobulin gamma Fc region receptor III-A, IgG Fc receptor III-A, CD16-II, CD16a antigen, Fc-gamma RIII-alpha, Fc-gamma RIII, Fc-gamma RIIIa, FcRIII, FcRIIIa, FcgammaRIIIA, FcR-10, IgG Fc receptor III-2, CD16a, FCGR3A {ECO:0000303|PubMed:23006327}

**Dilution**

IHC-P~~Ready-to-use

**Storage**

Maintain refrigerated at 2-8°C

**Precautions**

**CD16 Antibody is for research use only and not for use in diagnostic or therapeutic procedures.**

**CD16 - Protein Information****Name** FCGR3A {ECO:0000303|PubMed:23006327}**Synonyms****Function****CD16A, FCG3, FCGR3, IGFR3**

**Receptor for the Fc region of IgG. Binds complexed or aggregated IgG and also monomeric IgG. Mediates antibody-dependent cellular cytotoxicity (ADCC) and other antibody-dependent responses, such as phagocytosis.**

**Cellular Location**

**Cell membrane; Single-pass type I membrane protein. Secreted. Note=Exists also as a soluble receptor**

**Tissue Location**

**Expressed on natural killer cells, macrophages, subpopulation of T-cells, immature thymocytes and placental**

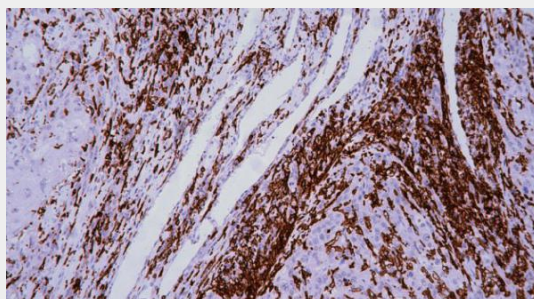
## trophoblasts

### CD16 - Protocols

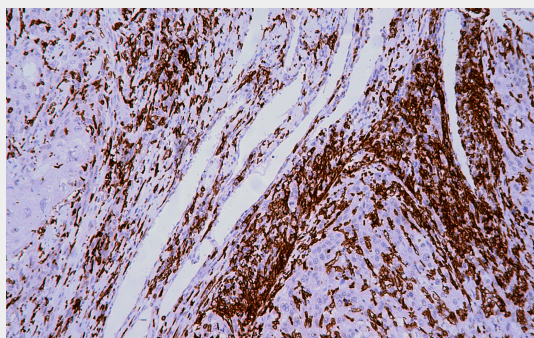
Provided below are standard protocols that you may find useful for product applications.

- [Western Blot](#)
- [Blocking Peptides](#)
- [Dot Blot](#)
- [Immunohistochemistry](#)
- [Immunofluorescence](#)
- [Immunoprecipitation](#)
- [Flow Cytometry](#)
- [Cell Culture](#)

### CD16 - Images



Esophageal squamous cell carcinoma



Immunohistochemical analysis of paraffin-embedded esophageal squamous cell carcinomas tissue using AD80281 performed on the Abcarta® FAIP-30 Fully automated IHC platform. Tissue was fixed with formaldehyde at room temperature, antigen retrieval was by heat mediation with a EDTA buffer (pH9.0). Samples were incubated with primary antibody (Ready-to-use) for 15 min at room temperature. AmpSee™ Detection Systems [Abcepta:AR005] was used as the secondary antibody.