

Hepatocyte
Mouse Monoclonal antibody(Mab)
Catalog # AD80292**Specification**

Hepatocyte - Product info

| | |
|-------------|------------|
| Application | IHC-P, IHC |
| Reactivity | Human |
| Host | Mouse |
| Clonality | Monoclonal |

Hepatocyte - Additional info**Dilution**

IHC-P~~Ready-to-use

IHC~~Ready-to-use

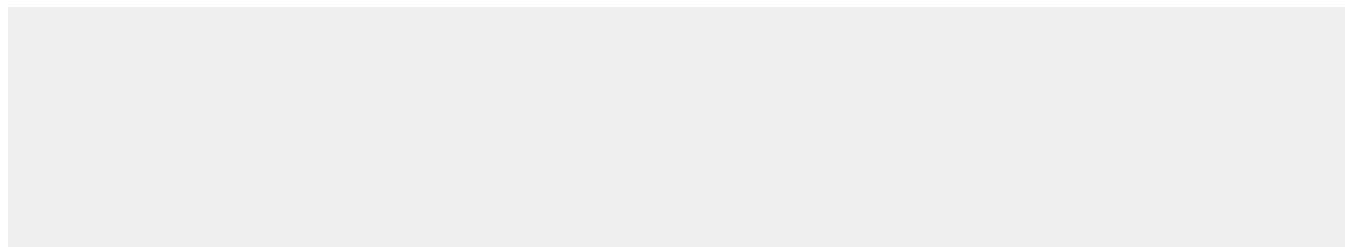
Storage

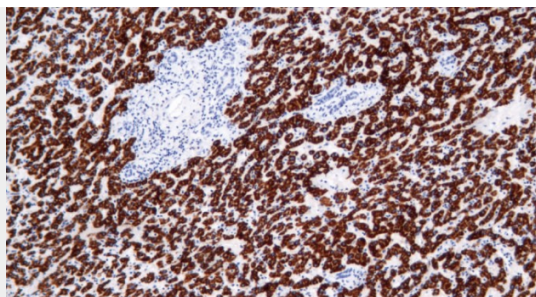
Maintain refrigerated at 2-8°C

Precautions**Hepatocyte Antibody is for research use only and not for use in diagnostic or therapeutic procedures.****Hepatocyte - Protein Information****Hepatocyte - Protocols**

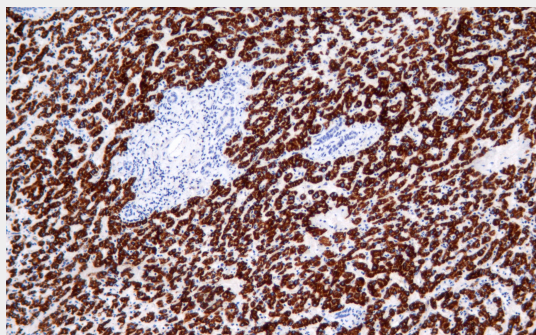
Provided below are standard protocols that you may find useful for product applications.

- [Western Blot](#)
- [Blocking Peptides](#)
- [Dot Blot](#)
- [Immunohistochemistry](#)
- [Immunofluorescence](#)
- [Immunoprecipitation](#)
- [Flow Cytometry](#)
- [Cell Culture](#)

Hepatocyte - Images



Liver cancer



Immunohistochemical analysis of paraffin-embedded 0 tissue using AD80292 performed on the Abcarta® FAIP-30 Fully automated IHC platform. Tissue was fixed with formaldehyde at room temperature, antigen retrieval was by heat mediation with a EDTA buffer (pH9. 0). Samples were incubated with primary antibody(Ready-to-use) for 15 min at room temperature. AmpSee™ Detection Systems□Abcepta:AR005□ was used as the secondary antibody.