

**ER-Beta Antibody**  
**Mouse Monoclonal Antibody (Mab)**  
**Catalog # AD80319****Specification**

---

**ER-Beta Antibody - Product info**

Application	IHC
Primary Accession	<a href="#">Q92731</a>
Reactivity	Human
Host	Mouse
Clonality	Monoclonal
Isotype	IgG2a
Calculated MW	59216

**ER-Beta Antibody - Additional info**

Gene ID	2100
Gene Name	ESR2

**Other Names**

Estrogen receptor beta, ER-beta, Nuclear receptor subfamily 3 group A member 2, ESR2, ESTRB, NR3A2

**Dilution**

IHC~~Ready-to-use

**Storage**

Maintain refrigerated at 2-8°C

**Precautions**

**ER-Beta Antibody is for research use only and not for use in diagnostic or therapeutic procedures.**

**ER-Beta Antibody - Protein Information****Name** ESR2**Synonyms****Function****ESTRB, NR3A2**

**Nuclear hormone receptor. Binds estrogens with an affinity similar to that of ESR1, and activates expression of reporter genes containing estrogen response elements (ERE) in an estrogen-dependent manner (PubMed:[20074560](#)). Isoform beta-cx lacks ligand binding ability and has no or only very low ere binding activity resulting in the loss of ligand-dependent transactivation ability. DNA-binding by ESR1 and ESR2 is rapidly lost at 37 degrees Celsius in the absence of ligand**

Cellular Location

Tissue Location

while in the presence of 17 beta-estradiol and 4-hydroxy-tamoxifen loss in DNA-binding at elevated temperature is more gradual.

Nucleus {ECO:0000255|PROSITE-ProRule:PRU00407,

ECO:0000269|PubMed:19126643, ECO:0000269|PubMed:20074560}

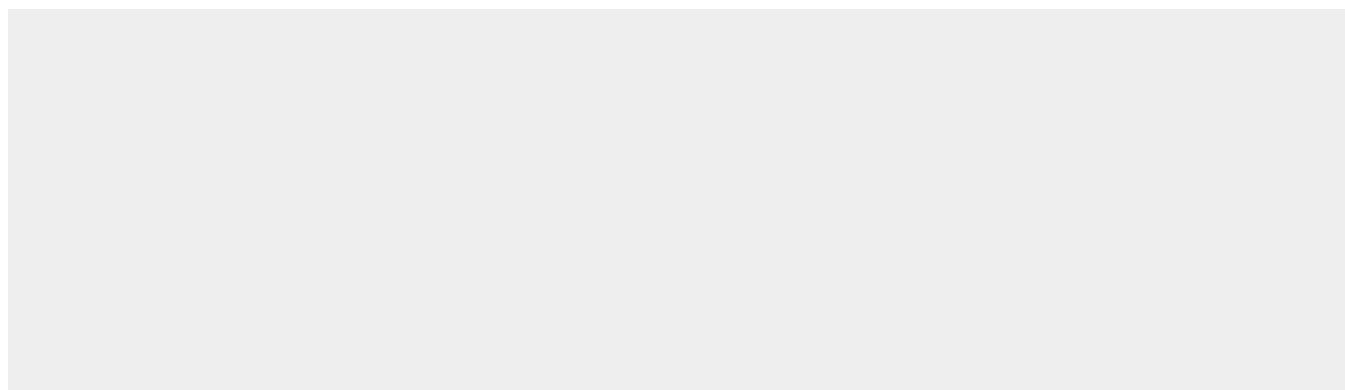
Isoform 1 is expressed in testis and ovary, and at a lower level in heart, brain, placenta, liver, skeletal muscle, spleen, thymus, prostate, colon, bone marrow, mammary gland and uterus. Also found in uterine bone, breast, and ovarian tumor cell lines, but not in colon and liver tumors. Isoform 2 is expressed in spleen, thymus, testis and ovary and at a lower level in skeletal muscle, prostate, colon, small intestine, leukocytes, bone marrow, mammary gland and uterus. Isoform 4 is found in testis. Isoform 5 is expressed in testis, and at a lower level in spleen, thymus, ovary, mammary gland and uterus. Isoform 6 is expressed in testis, placenta, skeletal muscle, spleen and leukocytes, and at a lower level in heart, lung, liver, kidney, pancreas, thymus, prostate, colon, small intestine, bone marrow, mammary gland and uterus. Not expressed in brain

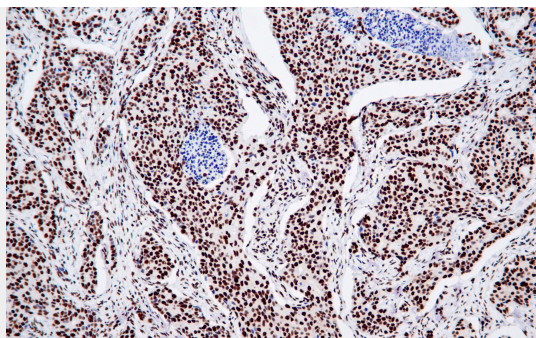
### ER-Beta Antibody - Protocols

Provided below are standard protocols that you may find useful for product applications.

- [Western Blot](#)
- [Blocking Peptides](#)
- [Dot Blot](#)
- [Immunohistochemistry](#)
- [Immunofluorescence](#)
- [Immunoprecipitation](#)
- [Flow Cytometry](#)
- [Cell Culture](#)

### ER-Beta Antibody - Images





Immunohistochemical analysis of paraffin-embedded breast cancer tissue using AD80319 performed on the Abcarta® FAIP-30 Fully automated IHC platform. Tissue was fixed with formaldehyde at room temperature, antigen retrieval was by heat mediation with a EDTA buffer (pH9.0). Samples were incubated with primary antibody (Ready-to-use) for 15 min at room temperature. AmpSee™ Detection Systems [Abcepta:AR005] was used as the secondary antibody.