

HNF1-Beta
Rabbit Monoclonal antibody(Mab)
Catalog # AD80341**Specification**

HNF1-Beta - Product info

Application	IHC-P, IHC
Primary Accession	P35680
Reactivity	Human
Host	Rabbit
Clonality	Monoclonal
Calculated MW	61324

HNF1-Beta - Additional info

Gene ID	6928
Gene Name	HNF1B

Other Names

Hepatocyte nuclear factor 1-beta, HNF-1-beta, HNF-1B, Homeoprotein LFB3, Transcription factor 2, TCF-2, Variant hepatic nuclear factor 1, vHNF1, HNF1B, TCF2

Dilution

IHC-P~~Ready-to-use
IHC~~Ready-to-use

Storage**Precautions**

This product is stored at 2-173 °C, please use it within the expiration date.
HNF1-Beta Antibody is for research use only and not for use in diagnostic or therapeutic procedures.

HNF1-Beta - Protein Information**Name** HNF1B

Synonyms
Function

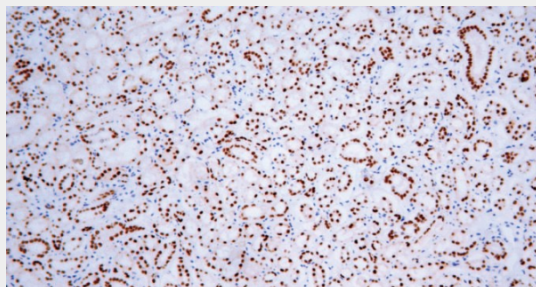
TCF2
Transcription factor, probably binds to the inverted palindrome
5'-GTTAATNATTAAC-3'.
Nucleus.

Cellular Location**HNF1-Beta - Protocols**

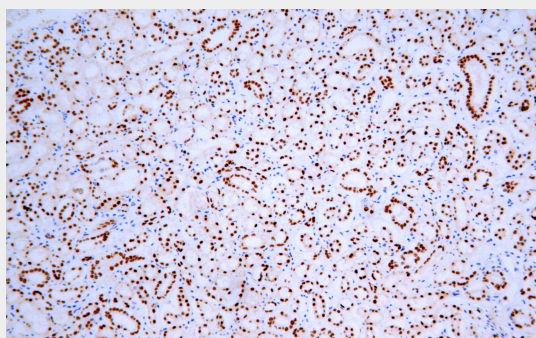
Provided below are standard protocols that you may find useful for product applications.

- [Western Blot](#)
- [Blocking Peptides](#)
- [Dot Blot](#)

- [Immunohistochemistry](#)
- [Immunofluorescence](#)
- [Immunoprecipitation](#)
- [Flow Cytometry](#)
- [Cell Culture](#)

HNF1-Beta - Images

Kidney



Immunohistochemical analysis of paraffin-embedded human kidney tissue using AD80341 performed on the Abcarta® FAIP-30 Fully automated IHC platform. Tissue was fixed with formaldehyde at room temperature, antigen retrieval was by heat mediation with a EDTA buffer (pH9.0). Samples were incubated with primary antibody (Ready-to-use) for 15 min at room temperature. AmpSee™ Detection Systems [Abcepta:AR005] was used as the secondary antibody.