

MC Mesothelioma
Rabbit Monoclonal antibody(Mab)
Catalog # AD80343**Specification**

MC Mesothelioma - Product info

Application	IHC-P
Reactivity	Human
Host	Rabbit
Clonality	Monoclonal

MC Mesothelioma - Additional info**Dilution**

IHC-P~~Ready-to-use

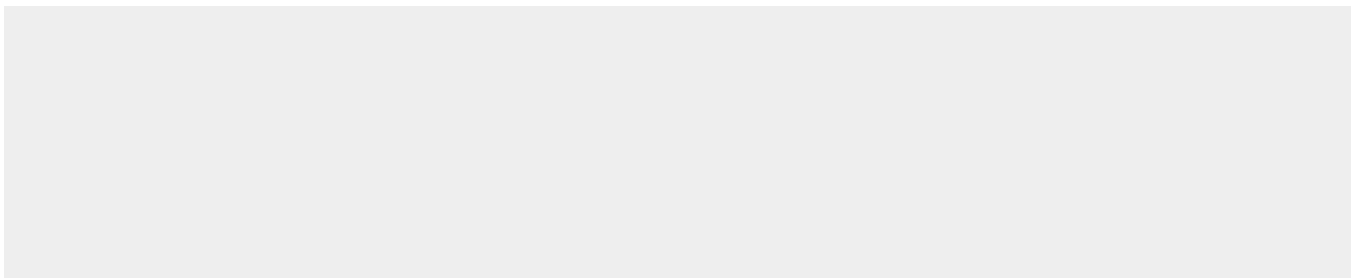
Storage

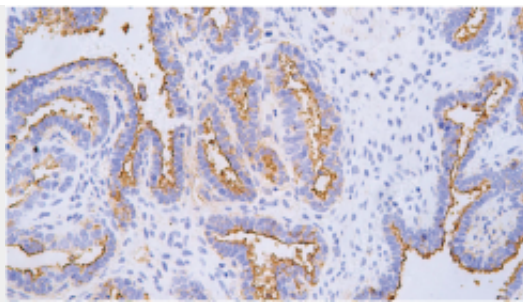
Maintain refrigerated at 2-8°C

Precautions**MC Antibody is for research use only and not for use in diagnostic or therapeutic procedures.****MC Mesothelioma - Protein Information****MC Mesothelioma - Protocols**

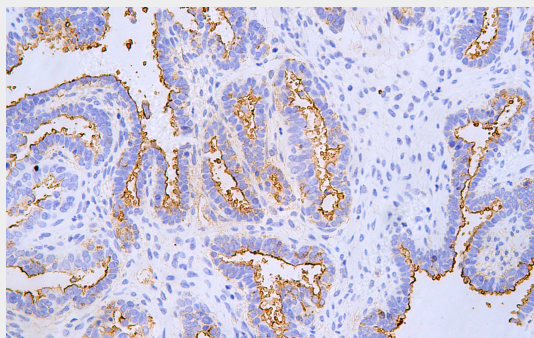
Provided below are standard protocols that you may find useful for product applications.

- [Western Blot](#)
- [Blocking Peptides](#)
- [Dot Blot](#)
- [Immunohistochemistry](#)
- [Immunofluorescence](#)
- [Immunoprecipitation](#)
- [Flow Cytometry](#)
- [Cell Culture](#)

MC Mesothelioma - Images



Ovarian carcinoma



Immunohistochemical analysis of paraffin-embedded ovarian Carcinoma tissue using AD80343 performed on the Abcarta® FAIP-30 Fully automated IHC platform. Tissue was fixed with formaldehyde at room temperature, antigen retrieval was by heat mediation with a EDTA buffer (pH9. 0). Samples were incubated with primary antibody(Ready-to-use) for 15 min at room temperature. AmpSee™ Detection Systems [Abcepta:AR005] was used as the secondary antibody.