

**GFAP**  
**Rabbit Monoclonal antibody(Mab)**  
**Catalog # AD80353****Specification**

---

**GFAP - Product info**

Application	<b>IHC-P</b>
Primary Accession	<a href="#">P14136</a>
Reactivity	<b>Human</b>
Host	<b>Rabbit</b>
Clonality	<b>Monoclonal</b>
Calculated MW	<b>49880</b>

**GFAP - Additional info**

Gene ID	<b>2670</b>
Gene Name	<b>GFAP</b>

**Other Names**

Glial fibrillary acidic protein, GFAP, GFAP

**Dilution**

IHC-P~~Ready-to-use

**Storage**

Maintain refrigerated at 2-8°C

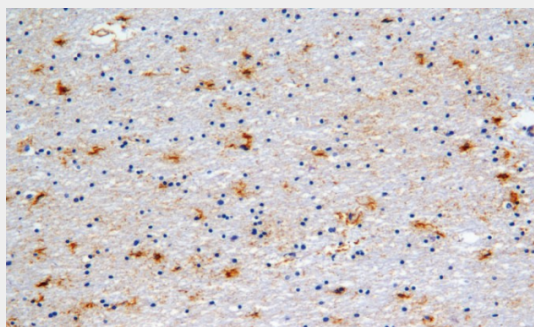
**Precautions****GFAP Antibody is for research use only and not for use in diagnostic or therapeutic procedures.****GFAP - Protein Information****Name** GFAP**Function****GFAP, a class-III intermediate filament, is a cell- specific marker that, during the development of the central nervous system, distinguishes astrocytes from other glial cells.****Cellular Location****Cytoplasm. Note=Associated with intermediate filaments****Tissue Location****Expressed in cells lacking fibronectin.****GFAP - Protocols**

Provided below are standard protocols that you may find useful for product applications.

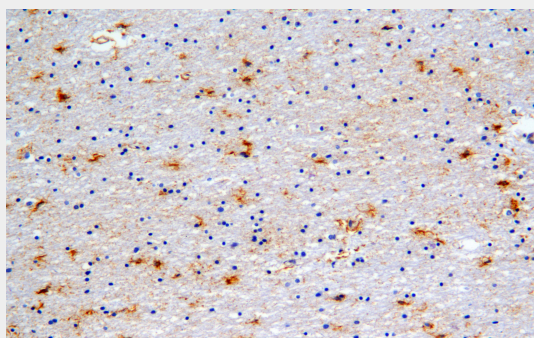
- [Western Blot](#)

- [Blocking Peptides](#)
- [Dot Blot](#)
- [Immunohistochemistry](#)
- [Immunofluorescence](#)
- [Immunoprecipitation](#)
- [Flow Cytometry](#)
- [Cell Culture](#)

## GFAP - Images



Brain glioma



Immunohistochemical analysis of paraffin-embedded glioblastoma tissue using AD80353 performed on the Abcarta® FAIP-30 Fully automated IHC platform. Tissue was fixed with formaldehyde at room temperature, antigen retrieval was by heat mediation with a EDTA buffer (pH9.0). Samples were incubated with primary antibody (Ready-to-use) for 15 min at room temperature. AmpSee™ Detection Systems [Abcepta:AR005] was used as the secondary antibody.