

CK18
Rabbit Monoclonal antibody(Mab)
Catalog # AD80354**Specification**

CK18 - Product info

Application	IHC-P
Primary Accession	P05783
Reactivity	Human
Host	Rabbit
Clonality	Monoclonal
Calculated MW	48058

CK18 - Additional info

Gene ID	3875
Gene Name	KRT18

Other Names

Keratin, type I cytoskeletal 18, Cell proliferation-inducing gene 46 protein, Cytokeratin-18, CK-18, Keratin-18, K18, KRT18, CYK18

Dilution

IHC-P~~Ready-to-use

Storage

Maintain refrigerated at 2-8°C

Precautions

CK18 Antibody is for research use only and not for use in diagnostic or therapeutic procedures.

CK18 - Protein Information

Name KRT18

Synonyms

Function

CYK18

Involved in the uptake of thrombin-antithrombin complexes by hepatic cells (By similarity). When phosphorylated, plays a role in filament reorganization. Involved in the delivery of mutated CFTR to the plasma membrane. Together with KRT8, is involved in interleukin-6 (IL-6)-mediated barrier protection.

Cellular Location

Cytoplasm, perinuclear region. Nucleus, nucleolus

Tissue Location

Expressed in colon, placenta, liver and very weakly in exocervix. Increased

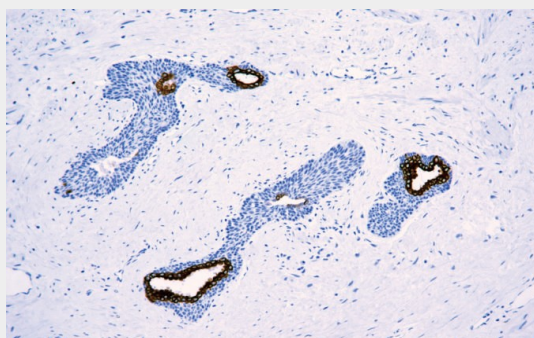
expression observed in lymph nodes of breast carcinoma.

CK18 - Protocols

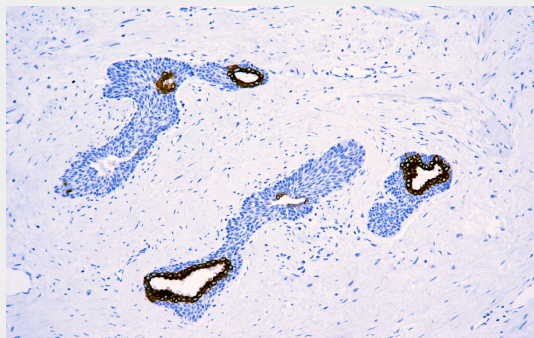
Provided below are standard protocols that you may find useful for product applications.

- [Western Blot](#)
- [Blocking Peptides](#)
- [Dot Blot](#)
- [Immunohistochemistry](#)
- [Immunofluorescence](#)
- [Immunoprecipitation](#)
- [Flow Cytometry](#)
- [Cell Culture](#)

CK18 - Images



Prostate cancer



Immunohistochemical analysis of paraffin-embedded prostatic cancer tissue using AD80354 performed on the Abcarta® FAIP-30 Fully automated IHC platform. Tissue was fixed with formaldehyde at room temperature, antigen retrieval was by heat mediation with a Citrate buffer (pH6.0). Samples were incubated with primary antibody (Ready-to-use) for 15 min at room temperature. AmpSee™ Detection Systems [Abcepta:AR005] was used as the secondary antibody.