

CD38
Rabbit Monoclonal antibody(Mab)
Catalog # AD80356**Specification**

CD38 - Product info

Application	IHC-P
Primary Accession	P28907
Reactivity	Human
Host	Rabbit
Clonality	Monoclonal
Calculated MW	34328

CD38 - Additional info

Gene ID	952
Gene Name	CD38

Other Names

ADP-ribosyl cyclase/cyclic ADP-ribose hydrolase 1, 3.2.2.-, 3.2.2.6, 2'-phospho-ADP-ribosyl cyclase, 2'-phospho-ADP-ribosyl cyclase/2'-phospho-cyclic-ADP-ribose transferase, 2.4.99.20, 2'-phospho-cyclic-ADP-ribose transferase, ADP-ribosyl cyclase 1, ADPRC 1, Cyclic ADP-ribose hydrolase 1, cADPR hydrolase 1, T10, CD38, CD38

Dilution

IHC-P~~Ready-to-use

Storage

Maintain refrigerated at 2-8°C

Precautions

CD38 Antibody is for research use only and not for use in diagnostic or therapeutic procedures.

CD38 - Protein Information**Name** CD38**Function**

Synthesizes the second messengers cyclic ADP-ribose and nicotinate-adenine dinucleotide phosphate, the former a second messenger for glucose-induced insulin secretion. Also has cADPr hydrolase activity. Also moonlights as a receptor in cells of the immune system.

Cellular Location

Membrane; Single-pass type II membrane protein

Tissue Location

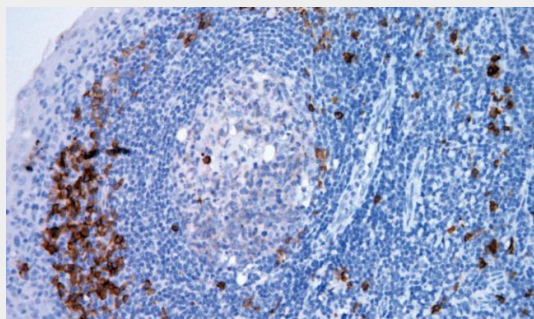
Expressed at high levels in pancreas, liver, kidney, brain, testis, ovary, placenta, malignant lymphoma and neuroblastoma.

CD38 - Protocols

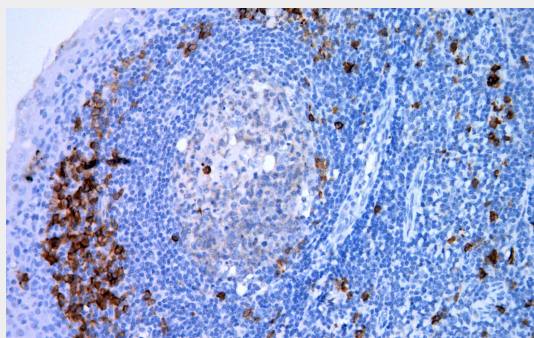
Provided below are standard protocols that you may find useful for product applications.

- [Western Blot](#)
- [Blocking Peptides](#)
- [Dot Blot](#)
- [Immunohistochemistry](#)
- [Immunofluorescence](#)
- [Immunoprecipitation](#)
- [Flow Cytometry](#)
- [Cell Culture](#)

CD38 - Images



Tonsil



Immunohistochemical analysis of paraffin-embedded human tonsil tissue using AD80356 performed on the Abcarta® FAIP-30 Fully automated IHC platform. Tissue was fixed with formaldehyde at room temperature, antigen retrieval was by heat mediation with a EDTA buffer (pH9.0). Samples were incubated with primary antibody (Ready-to-use) for 15 min at room temperature. AmpSee™ Detection Systems [Abcepta:AR005] was used as the secondary antibody.