

Kappa Chain
Rabbit Monoclonal antibody(Mab)
Catalog # AD80357**Specification**

Kappa Chain - Product info

Application	IHC-P
Primary Accession	P01834
Reactivity	Human
Host	Rabbit
Clonality	Monoclonal
Calculated MW	11765

Kappa Chain - Additional info

Gene Name	IGKC {ECO:0000303 PubMed:11549845, ECO:0000303 Ref.13}
-----------	---

Other Names

Immunoglobulin kappa constant {ECO:0000303|PubMed:11549845, ECO:0000303|Ref.13}, Ig kappa chain C region, Ig kappa chain C region AG, Ig kappa chain C region CUM, Ig kappa chain C region EU, Ig kappa chain C region OU, Ig kappa chain C region ROY {ECO:0000305|Ref.3}, Ig kappa chain C region TI, IGKC {ECO:0000303|PubMed:11549845, ECO:0000303|Ref.13}

Dilution

IHC-P~~Ready-to-use

Storage

Maintain refrigerated at 2-8°C

Precautions

Kappa Antibody is for research use only and not for use in diagnostic or therapeutic procedures.

Kappa Chain - Protein Information

Name IGKC {ECO:0000303|PubMed:11549845, ECO:0000303|Ref.13}

Function

Constant region of immunoglobulin light chains. Immunoglobulins, also known as antibodies, are membrane-bound or secreted glycoproteins produced by B lymphocytes. In the recognition phase of humoral immunity, the membrane-bound immunoglobulins serve as receptors which, upon binding of a specific antigen, trigger the clonal expansion and differentiation of B lymphocytes into immunoglobulins-secreting plasma cells. Secreted immunoglobulins mediate the

effector phase of humoral immunity, which results in the elimination of bound antigens (PubMed:[22158414](#), PubMed:[20176268](#)). The antigen binding site is formed by the variable domain of one heavy chain, together with that of its associated light chain. Thus, each immunoglobulin has two antigen binding sites with remarkable affinity for a particular antigen. The variable domains are assembled by a process called V-(D)-J rearrangement and can then be subjected to somatic hypermutations which, after exposure to antigen and selection, allow affinity maturation for a particular antigen (PubMed:[17576170](#), PubMed:[20176268](#)).
Secreted. Cell membrane

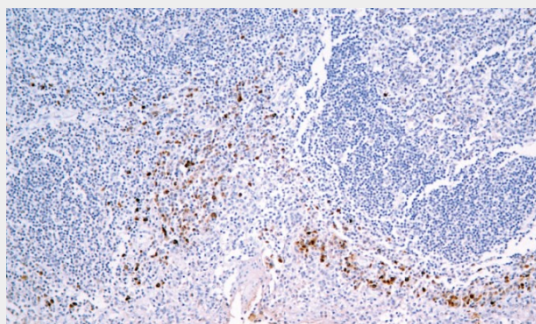
Cellular Location

Kappa Chain - Protocols

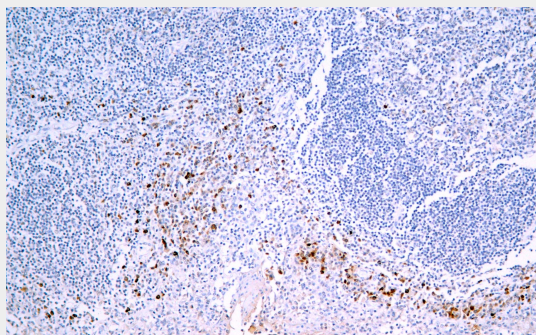
Provided below are standard protocols that you may find useful for product applications.

- [Western Blot](#)
- [Blocking Peptides](#)
- [Dot Blot](#)
- [Immunohistochemistry](#)
- [Immunofluorescence](#)
- [Immunoprecipitation](#)
- [Flow Cytometry](#)
- [Cell Culture](#)

Kappa Chain - Images



Tonsil



Immunohistochemical analysis of paraffin-embedded human tonsil tissue using AD80357 performed on the Abcarta® FAIP-30 Fully automated IHC platform. Tissue was fixed with formaldehyde at room temperature, antigen retrieval was by heat mediation with a Citrate buffer (pH 6.0). Samples were incubated with primary antibody (Ready-to-use) for 15 min at room temperature. AmpSee™ Detection Systems [Abcepta:AR005] was used as the secondary antibody.