

CD6
Mouse Monoclonal antibody(Mab)
Catalog # AD80406**Specification**

CD6 - Product info

Application	IHC-P
Primary Accession	P30203
Reactivity	Human
Host	Mouse
Clonality	Monoclonal
Calculated MW	71801

CD6 - Additional info

Gene ID	923
Gene Name	CD6

Other Names

T-cell differentiation antigen CD6, T12, TP120, CD6, Soluble CD6, CD6 (HGNC:1691)

Dilution

IHC-P~~Ready-to-use

Storage

Maintain refrigerated at 2-8°C

Precautions

CD6 Antibody is for research use only and not for use in diagnostic or therapeutic procedures.

CD6 - Protein Information

Name CD6 ([HGNC:1691](#))

Function

Cell adhesion molecule that mediates cell-cell contacts and regulates T-cell responses via its interaction with ALCAM/CD166 (PubMed:[15048703](#), PubMed:[15294938](#), PubMed:[16352806](#), PubMed:[16914752](#), PubMed:[24945728](#), PubMed:[24584089](#)). Contributes to signaling cascades triggered by activation of the TCR/CD3 complex (PubMed:[24584089](#)). Functions as costimulatory molecule; promotes T-cell activation and proliferation (PubMed:[15294938](#), PubMed:[16352806](#),

Cellular Location

Tissue Location

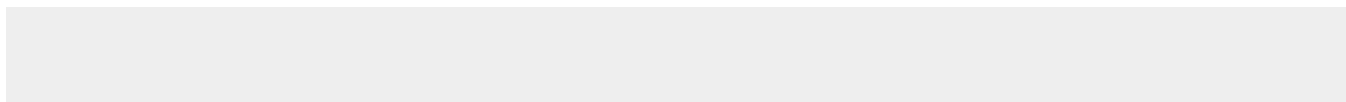
PubMed:[16914752](#)). Contributes to the formation and maturation of the immunological synapse (PubMed:[15294938](#), PubMed:[16352806](#)). Functions as calcium-dependent pattern receptor that binds and aggregates both Gram-positive and Gram-negative bacteria. Binds both lipopolysaccharide (LPS) from Gram-negative bacteria and lipoteichoic acid from Gram-positive bacteria (PubMed:[17601777](#)). LPS binding leads to the activation of signaling cascades and down-stream MAP kinases (PubMed:[17601777](#)). Mediates activation of the inflammatory response and the secretion of pro-inflammatory cytokines in response to LPS (PubMed:[17601777](#)). Cell membrane; Single-pass type I membrane protein. Note=Detected at the immunological synapse, i.e, at the contact zone between antigen-presenting dendritic cells and T-cells (PubMed:[15294938](#), PubMed:[16352806](#)) Colocalizes with the TCR/CD3 complex at the immunological synapse (PubMed:[15294938](#)). Detected on thymocytes (PubMed:[15294938](#)). Detected on peripheral blood T-cells (PubMed:[15048703](#), PubMed:[16352806](#)). Detected on natural killer (NK) cells (PubMed:[16352806](#)). Soluble CD6 is detected in blood serum (at protein level) (PubMed:[17601777](#)). Detected in spleen, thymus, appendix, lymph node and peripheral blood leukocytes (PubMed:[9013954](#)). Expressed by thymocytes, mature T-cells, a subset of B-cells known as B-1 cells, and by some cells in the brain.

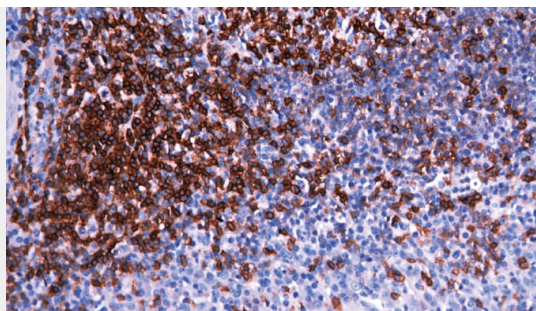
CD6 - Protocols

Provided below are standard protocols that you may find useful for product applications.

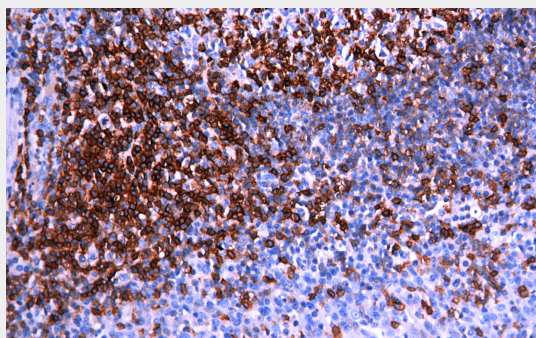
- [Western Blot](#)
- [Blocking Peptides](#)
- [Dot Blot](#)
- [Immunohistochemistry](#)
- [Immunofluorescence](#)
- [Immunoprecipitation](#)
- [Flow Cytometry](#)
- [Cell Culture](#)

CD6 - Images





Tonsil



Immunohistochemical analysis of paraffin-embedded human tonsil tissue using AD80406 performed on the Abcarta® FAIP-30 Fully automated IHC platform. Tissue was fixed with formaldehyde at room temperature, antigen retrieval was by heat mediation with a Citrate buffer (pH6. 0). Samples were incubated with primary antibody(Ready-to-use) for 15 min at room temperature. AmpSee™ Detection Systems□Abcepta:AR005□ was used as the secondary antibody.