

**Granzyme B Antibody**  
**Mouse Monoclonal Antibody (Mab)**  
**Catalog # AD80412**

**Specification**

---

**Granzyme B Antibody - Product info**

Application	IHC
Primary Accession	<a href="#">P10144</a>
Reactivity	Human
Host	Mouse
Clonality	Monoclonal
Isotype	IgG
Calculated MW	27716

**Granzyme B Antibody - Additional info**

Gene ID	3002
Gene Name	GZMB

**Other Names**

Granzyme B, 3.4.21.79, C11, CTLA-1, Cathepsin G-like 1, CTSL1, Cytotoxic T-lymphocyte proteinase 2, Lymphocyte protease, Fragmentin-2, Granzyme-2, Human lymphocyte protein, HLP, SECT, T-cell serine protease 1-3E, GZMB, CGL1, CSPB, CTLA1, GRB

**Dilution**

IHC~~Ready-to-use

**Storage**

Maintain refrigerated at 2-8°C

**Precautions**

**Granzyme B Antibody is for research use only and not for use in diagnostic or therapeutic procedures.**

**Granzyme B Antibody - Protein Information**

**Name** GZMB {ECO:0000303|PubMed:32188940, ECO:0000312|HGNC:HGNC:4709}

**Synonyms**  
**Function**

**CGL1, CSPB, CTLA1, GRB**

**This enzyme is necessary for target cell lysis in cell- mediated immune responses. It cleaves after Asp. Seems to be linked to an activation cascade of caspases (aspartate-specific cysteine proteases) responsible for apoptosis execution. Cleaves caspase-3, -7, -9 and 10 to give rise to active enzymes mediating apoptosis.**

**Cellular Location**

**Cytoplasmic granule. Note=Cytoplasmic granules of cytolytic T-lymphocytes and**

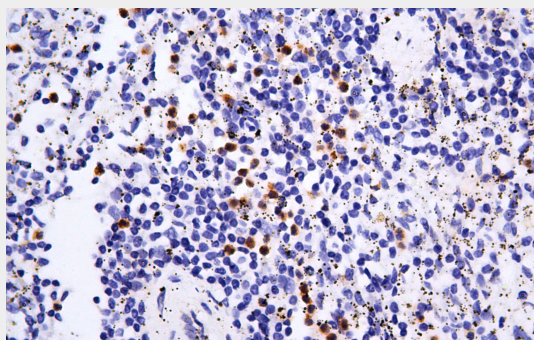
## natural killer cells

### Granzyme B Antibody - Protocols

Provided below are standard protocols that you may find useful for product applications.

- [Western Blot](#)
- [Blocking Peptides](#)
- [Dot Blot](#)
- [Immunohistochemistry](#)
- [Immunofluorescence](#)
- [Immunoprecipitation](#)
- [Flow Cytometry](#)
- [Cell Culture](#)

### Granzyme B Antibody - Images



Immunohistochemical analysis of paraffin-embedded human spleen tissue using AD80412 performed on the Abcarta® FAIP-30 Fully automated IHC platform. Tissue was fixed with formaldehyde at room temperature, antigen retrieval was by heat mediation with a Citrate buffer (pH6.0). Samples were incubated with primary antibody (Ready-to-use) for 15 min at room temperature. AmpSee™ Detection Systems [Abcepta:AR005] was used as the secondary antibody.