

**CD30 Antibody**  
**Rabbit Monoclonal Antibody (Mab)**  
**Catalog # AD80420****Specification**

---

**CD30 Antibody - Product info**

Application	IHC
Primary Accession	<a href="#">P28908</a>
Reactivity	Human
Host	Rabbit
Clonality	Monoclonal
Isotype	IgG
Calculated MW	63747

**CD30 Antibody - Additional info**

Gene ID	943
Gene Name	TNFRSF8 ( <a href="#">HGNC:11923</a> )
Other Names	

Tumor necrosis factor receptor superfamily member 8 {ECO:0000312|HGNC:HGNC:11923}, CD30L receptor, Ki-1 antigen, Lymphocyte activation antigen CD30, CD30, TNFRSF8 (<a href="http://www.genenames.org/cgi-bin/gene\_symbol\_report?hgnc\_id=11923" target="\_blank">HGNC:11923</a>)

**Dilution**

IHC~~Ready-to-use

**Storage**

Maintain refrigerated at 2-8°C

**Precautions**

**CD30 Antibody is for research use only and not for use in diagnostic or therapeutic procedures.**

**CD30 Antibody - Protein Information**

**Name** TNFRSF8 ([HGNC:11923](#))

**Function**

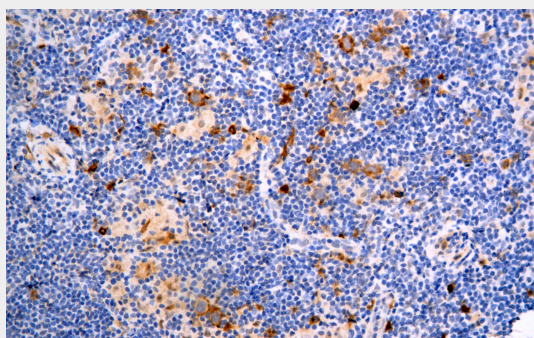
**Receptor for TNFSF8/CD30L. May play a role in the regulation of cellular growth and transformation of activated lymphoblasts. Regulates gene expression through activation of NF- kappa-B. Isoform 1: Cell membrane; Single-pass type I membrane protein**

**Cellular Location****CD30 Antibody - Protocols**

Provided below are standard protocols that you may find useful for product applications.

- [Western Blot](#)
- [Blocking Peptides](#)
- [Dot Blot](#)
- [Immunohistochemistry](#)
- [Immunofluorescence](#)
- [Immunoprecipitation](#)
- [Flow Cytometry](#)
- [Cell Culture](#)

#### **CD30 Antibody - Images**



Immunohistochemical analysis of paraffin-embedded Hodgkin lymphoma tissue using AD80420 performed on the Abcarta® FAIP-30 Fully automated IHC platform. Tissue was fixed with formaldehyde at room temperature, antigen retrieval was by heat mediation with a EDTA buffer (pH 9.0). Samples were incubated with primary antibody (Ready-to-use) for 15 min at room temperature. AmpSee™ Detection Systems [Abcepta:AR005] was used as the secondary antibody.