

**CD35**  
**Rabbit Monoclonal antibody(Mab)**  
**Catalog # AD80421****Specification**

---

**CD35 - Product info**

Application	<b>IHC-P</b>
Primary Accession	<a href="#">P17927</a>
Reactivity	<b>Human</b>
Host	<b>Rabbit</b>
Clonality	<b>Monoclonal</b>
Calculated MW	<b>223663</b>

**CD35 - Additional info**

Gene ID	<b>1378</b>
Gene Name	<b>CR1</b>
<b>Other Names</b>	
Complement receptor type 1, C3b/C4b receptor, CD35, CR1, C3BR	

**Dilution**

IHC-P~~Ready-to-use

**Storage**

Maintain refrigerated at 2-8°C

**Precautions****CD35 Antibody is for research use only and not for use in diagnostic or therapeutic procedures.****CD35 - Protein Information****Name** CR1Synonyms  
Function**C3BR**  
**Membrane immune adherence receptor that plays a critical role in the capture and clearance of complement-opsonized pathogens by erythrocytes and monocytes/macrophages (PubMed:[2963069](#)). Mediates the binding by these cells of particles and immune complexes that have activated complement to eliminate them from the circulation (PubMed:[2963069](#)). Acts also in the inhibition of spontaneous complement activation by impairing the formation and function of the alternative and classical pathway C3/C5 convertases, and by**

serving as a cofactor for the cleavage by factor I of C3b to iC3b, C3c and C3d,g, and of C4b to C4c and C4d (PubMed:[2972794](#), PubMed:[8175757](#)). Plays also a role in immune regulation by contributing, upon ligand binding, to the generation of regulatory T cells from activated helper T cells (PubMed:[25742728](#)).

Cellular Location

**Membrane; Single-pass type I membrane protein**

Tissue Location

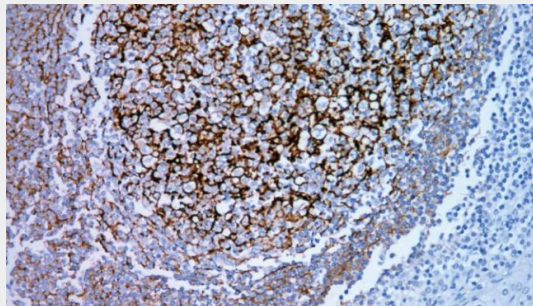
**Present on erythrocytes, a subset of T cells, mature B cells, follicular dendritic cells, monocytes and granulocytes.**

### CD35 - Protocols

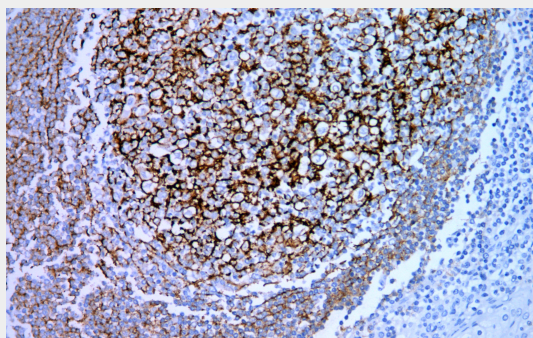
Provided below are standard protocols that you may find useful for product applications.

- [Western Blot](#)
- [Blocking Peptides](#)
- [Dot Blot](#)
- [Immunohistochemistry](#)
- [Immunofluorescence](#)
- [Immunoprecipitation](#)
- [Flow Cytometry](#)
- [Cell Culture](#)

### CD35 - Images



Tonsil



Immunohistochemical analysis of paraffin-embedded human tonsil tissue using AD80421 performed on the Abcarta® FAIP-30 Fully automated IHC platform. Tissue was fixed with formaldehyde at room temperature, antigen retrieval was by heat mediation with a Citrate buffer

(pH6.0). Samples were incubated with primary antibody (Ready-to-use) for 15 min at room temperature. AmpSee™ Detection Systems [Abcepta:AR005] was used as the secondary antibody.