

**FH**  
**Mouse Monoclonal antibody(Mab)**  
**Catalog # AD80425****Specification**

---

**FH - Product info**

Application	<b>IHC-P</b>
Primary Accession	<a href="#">P07954</a>
Reactivity	<b>Human</b>
Host	<b>Mouse</b>
Clonality	<b>Monoclonal</b>
Calculated MW	<b>54637</b>

**FH - Additional info**

Gene ID	<b>2271</b>
Gene Name	<b>FH</b>
<b>Other Names</b>	
Fumarate hydratase, mitochondrial, Fumarase {ECO:0000303 PubMed:27037871, ECO:0000303 PubMed:3828494, ECO:0000303 Ref.2}, HsFH, 4.2.1.2, FH {ECO:0000303 PubMed:27037871, ECO:0000312 HGNC:HGNC:3700}	

**Dilution**

IHC-P~~Ready-to-use

**Storage**

Maintain refrigerated at 2-8°C

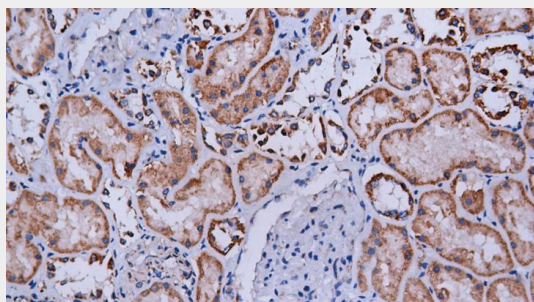
**Precautions****FH Antibody is for research use only and not for use in diagnostic or therapeutic procedures.****FH - Protein Information****Name** FH {ECO:0000303|PubMed:27037871, ECO:0000312|HGNC:HGNC:3700}

Function	<b>Also acts as a tumor suppressor.</b>
Cellular Location	<b>Isoform Mitochondrial: Mitochondrion.</b>
Tissue Location	<b>Expressed in red blood cells; underexpressed in red blood cells (cytoplasm) of patients with hereditary non- spherocytic hemolytic anemia of unknown etiology</b>

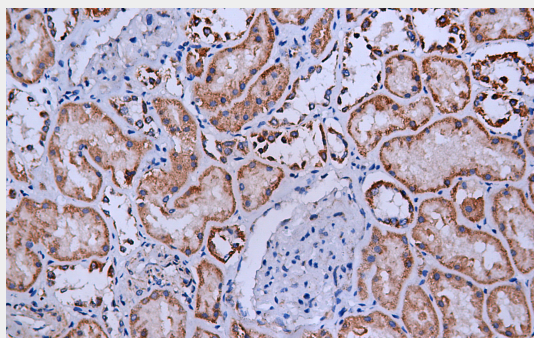
**FH - Protocols**

Provided below are standard protocols that you may find useful for product applications.

- [Western Blot](#)
- [Blocking Peptides](#)
- [Dot Blot](#)
- [Immunohistochemistry](#)
- [Immunofluorescence](#)
- [Immunoprecipitation](#)
- [Flow Cytometry](#)
- [Cell Culture](#)

**FH - Images**

Kidney



Immunohistochemical analysis of paraffin-embedded human kidney tissue using AD80425 performed on the Abcarta® FAIP-30 Fully automated IHC platform. Tissue was fixed with formaldehyde at room temperature, antigen retrieval was by heat mediation with a EDTA buffer (pH9.0). Samples were incubated with primary antibody (Ready-to-use) for 15 min at room temperature. AmpSee™ Detection Systems [Abcepta:AR005] was used as the secondary antibody.