

LMO2
Rabbit Monoclonal antibody(Mab)
Catalog # AD80458**Specification**

LMO2 - Product info

Application	IHC-P, IHC
Primary Accession	P25791
Reactivity	Human
Host	Rabbit
Clonality	Monoclonal
Calculated MW	18358

LMO2 - Additional info

Gene ID	2100
Gene Name	ESR2

Other Names

Rhombotin-2, Cysteine-rich protein TTG-2, LIM domain only protein 2, LMO-2, T-cell translocation protein 2, LMO2, RBTN2, RBTN1, RHOM2, TTG2

Dilution

IHC-P~~Ready-to-use
IHC~~Ready-to-use

Storage	This product is stored at 2-197 °C, please use it within the expiration date.
Precautions	ER-Beta Antibody is for research use only and not for use in diagnostic or therapeutic procedures.

LMO2 - Protein Information**Name** LMO2

Synonyms	ESTRB, NR3A2
Function	Nuclear hormone receptor. Binds estrogens with an affinity similar to that of ESR1, and activates expression of reporter genes containing estrogen response elements (ERE) in an estrogen-dependent manner (PubMed: 20074560). Isoform beta-cx lacks ligand binding ability and has no or only very low ere binding activity resulting in the loss of ligand-dependent transactivation ability. DNA-binding by ESR1 and ESR2 is rapidly lost at 37 degrees Celsius in the absence of ligand while in the presence of 17 beta-estradiol

Cellular Location

Tissue Location

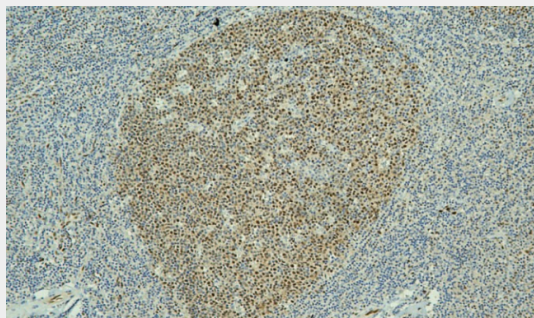
and 4-hydroxy-tamoxifen loss in DNA-binding at elevated temperature is more gradual.
Nucleus {ECO:0000255|PROSITE-ProRule:PRU00407, ECO:0000269|PubMed:19126643, ECO:0000269|PubMed:20074560}
Isoform 1 is expressed in testis and ovary, and at a lower level in heart, brain, placenta, liver, skeletal muscle, spleen, thymus, prostate, colon, bone marrow, mammary gland and uterus. Also found in uterine bone, breast, and ovarian tumor cell lines, but not in colon and liver tumors. Isoform 2 is expressed in spleen, thymus, testis and ovary and at a lower level in skeletal muscle, prostate, colon, small intestine, leukocytes, bone marrow, mammary gland and uterus. Isoform 4 is found in testis. Isoform 5 is expressed in testis, and at a lower level in spleen, thymus, ovary, mammary gland and uterus. Isoform 6 is expressed in testis, placenta, skeletal muscle, spleen and leukocytes, and at a lower level in heart, lung, liver, kidney, pancreas, thymus, prostate, colon, small intestine, bone marrow, mammary gland and uterus. Not expressed in brain

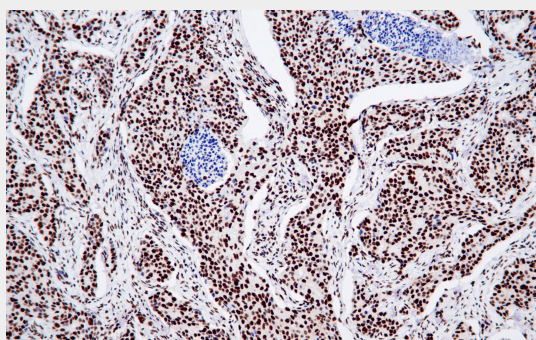
LMO2 - Protocols

Provided below are standard protocols that you may find useful for product applications.

- [Western Blot](#)
- [Blocking Peptides](#)
- [Dot Blot](#)
- [Immunohistochemistry](#)
- [Immunofluorescence](#)
- [Immunoprecipitation](#)
- [Flow Cytometry](#)
- [Cell Culture](#)

LMO2 - Images



Tonsil

Immunohistochemical analysis of paraffin-embedded breast cancer tissue using AD80319 performed on the Abcarta® FAIP-30 Fully automated IHC platform. Tissue was fixed with formaldehyde at room temperature, antigen retrieval was by heat mediation with a EDTA buffer (pH9.0). Samples were incubated with primary antibody (Ready-to-use) for 15 min at room temperature. AmpSee™ Detection Systems [Abcepta:ADR005] was used as the secondary antibody.