

Cadherin 17
Rabbit Polyclonal antibody(Pab)
Catalog # AD80494**Specification**

Cadherin 17 - Product info

Application	IHC-P, IHC
Primary Accession	Q12864
Reactivity	Human
Host	Rabbit
Clonality	Polyclonal

Cadherin 17 - Additional info

Gene ID	2026
Gene Name	ENO2
Other Names	
Gamma-enolase, 4.2.1.11, 2-phospho-D-glycerate hydro-lyase, Enolase 2, Neural enolase, Neuron-specific enolase, NSE, ENO2	

Dilution

IHC-P~~Ready-to-use
IHC~~Ready-to-use

Storage	This product is stored at 2-41 °C, please use it within the expiration date.
Precautions	NSE Antibody is for research use only and not for use in diagnostic or therapeutic procedures.

Cadherin 17 - Protein Information

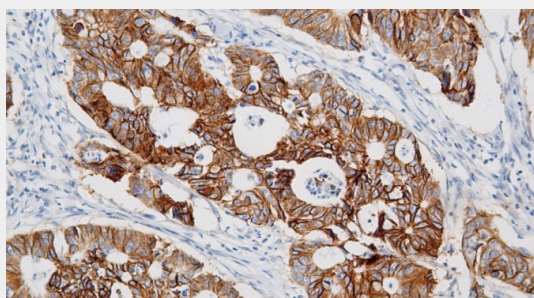
Function	Has neurotrophic and neuroprotective properties on a broad spectrum of central nervous system (CNS) neurons. Binds, in a calcium-dependent manner, to cultured neocortical neurons and promotes cell survival (By similarity).
Cellular Location	Cytoplasm. Cell membrane. Note=Can translocate to the plasma membrane in either the homodimeric (alpha/alpha) or heterodimeric (alpha/gamma) form.
Tissue Location	The alpha/alpha homodimer is expressed in embryo and in most adult tissues. The alpha/beta heterodimer and the beta/beta homodimer are found in striated muscle, and the alpha/gamma heterodimer and the gamma/gamma homodimer in neurons

Cadherin 17 - Protocols

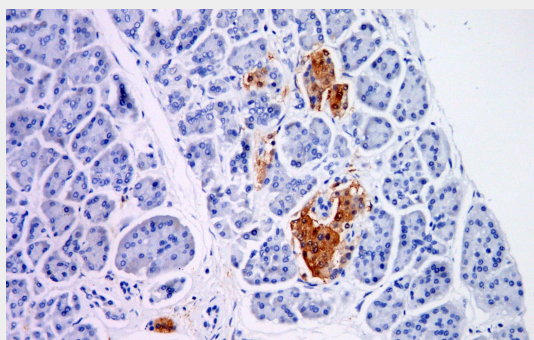
Provided below are standard protocols that you may find useful for product applications.

- [Western Blot](#)
- [Blocking Peptides](#)
- [Dot Blot](#)
- [Immunohistochemistry](#)
- [Immunofluorescence](#)
- [Immunoprecipitation](#)
- [Flow Cytometry](#)
- [Cell Culture](#)

Cadherin 17 - Images



Colorectal



Immunohistochemical analysis of paraffin-embedded human pancreas tissue using AD80105 performed on the Abcarta® FAIP-30 Fully automated IHC platform. Tissue was fixed with formaldehyde at room temperature, antigen retrieval was by heat mediation with a Citrate buffer (pH6. 0). Samples were incubated with primary antibody (Ready-to-use) for 15 min at room temperature. AmpSee™ Detection Systems □ Abcepta: ADR005 □ was used as the secondary antibody.