

SSTR 2
Rabbit Monoclonal antibody(Mab)
Catalog # AD80506**Specification**

SSTR 2 - Product info

Application	IHC-P, IHC
Primary Accession	P30874
Reactivity	Human
Host	Rabbit
Clonality	Monoclonal
Calculated MW	41333

SSTR 2 - Additional info

Gene ID	6390
Gene Name	SDHB
Other Names	
Somatostatin receptor type 2, SS-2-R, SS2-R, SS2R, SST2, SRIF-1, SSTR2	

Dilution

IHC-P~~Ready-to-use
IHC~~Ready-to-use

Storage	This product is stored at 2-288 °C, please use it within the expiration date.
Precautions	SDHB Antibody is for research use only and not for use in diagnostic or therapeutic procedures.

SSTR 2 - Protein Information**Name** SSTR2

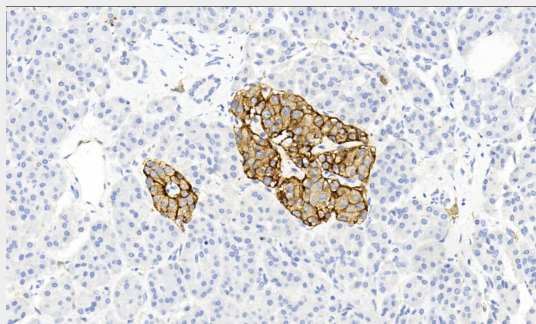
Synonyms	SDH, SDH1
Function	Iron-sulfur protein (IP) subunit of succinate dehydrogenase (SDH) that is involved in complex II of the mitochondrial electron transport chain and is responsible for transferring electrons from succinate to ubiquinone (coenzyme Q).
Cellular Location	Mitochondrion inner membrane; Peripheral membrane protein; Matrix side

SSTR 2 - Protocols

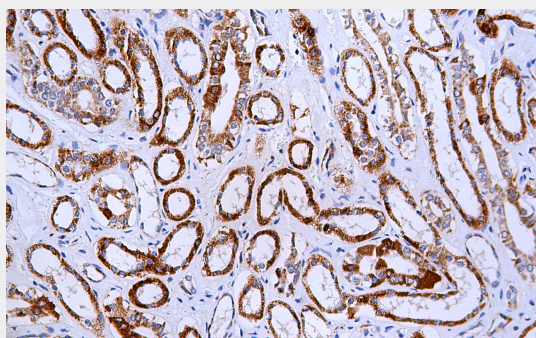
Provided below are standard protocols that you may find useful for product applications.

- [Western Blot](#)
- [Blocking Peptides](#)
- [Dot Blot](#)
- [Immunohistochemistry](#)
- [Immunofluorescence](#)
- [Immunoprecipitation](#)
- [Flow Cytometry](#)
- [Cell Culture](#)

SSTR 2 - Images



Pancreas



Immunohistochemical analysis of paraffin-embedded human kidney tissue using AD80271 performed on the Abcarta® FAIP-30 Fully automated IHC platform. Tissue was fixed with formaldehyde at room temperature, antigen retrieval was by heat mediation with a Citrate buffer (pH6.0). Samples were incubated with primary antibody (Ready-to-use) for 15 min at room temperature. AmpSee™ Detection Systems [Abcepta:ADR005] was used as the secondary antibody.