

CD22
Rabbit Monoclonal antibody(Mab)
Catalog # AD80516**Specification**

CD22 - Product info

| | |
|-------------------|------------------------|
| Application | IHC-P |
| Primary Accession | P20273 |
| Reactivity | Human |
| Host | Rabbit |
| Clonality | Monoclonal |
| Calculated MW | 95348 |

CD22 - Additional infoGene ID **933****Other Names**

B-cell receptor CD22, B-lymphocyte cell adhesion molecule, BL-CAM, Sialic acid-binding Ig-like lectin 2, Siglec-2, T-cell surface antigen Leu-14, CD22, CD22 {ECO:0000303|PubMed:1691828, ECO:0000312|HGNC:HGNC:1643}

Dilution

IHC-P~~Ready-to-use

Storage

This product is stored at 2-64 °C, please use it within the expiration date.

CD22 - Protein Information**Name** CD22 {ECO:0000303|PubMed:1691828, ECO:0000312|HGNC:HGNC:1643}**Function**

Mediates B-cell B-cell interactions. May be involved in the localization of B-cells in lymphoid tissues. Binds sialylated glycoproteins; one of which is CD45. Preferentially binds to alpha-2,6- linked sialic acid. The sialic acid recognition site can be masked by cis interactions with sialic acids on the same cell surface. Upon ligand induced tyrosine phosphorylation in the immune response seems to be involved in regulation of B-cell antigen receptor signaling. Plays a role in positive regulation through interaction with Src family tyrosine kinases and may also act as an inhibitory receptor by recruiting cytoplasmic phosphatases via their SH2 domains that block signal transduction through dephosphorylation of signaling

Cellular Location

Tissue Location

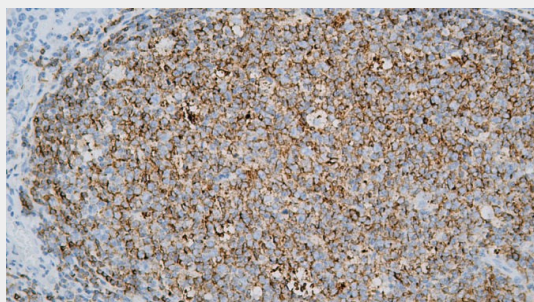
molecules.
**Cell membrane; Single-pass type I
membrane protein
B-lymphocytes.**

CD22 - Protocols

Provided below are standard protocols that you may find useful for product applications.

- [Western Blot](#)
- [Blocking Peptides](#)
- [Dot Blot](#)
- [Immunohistochemistry](#)
- [Immunofluorescence](#)
- [Immunoprecipitation](#)
- [Flow Cytometry](#)
- [Cell Culture](#)

CD22 - Images



Tonsil