

N-Cadherin
Mouse Monoclonal antibody(Mab)
Catalog # AD80521**Specification**

N-Cadherin - Product info

Application	IHC-P
Primary Accession	P19022
Reactivity	Human
Host	Mouse
Clonality	Monoclonal
Calculated MW	99809

N-Cadherin - Additional info

Gene ID	1000
Other Names	
Cadherin-2, CDw325, Neural cadherin, N-cadherin, CD325, CDH2, CDHN, NCAD	

Dilution

IHC-P~~Ready-to-use

Storage	This product is stored at 2-228 °C, please use it within the expiration date.
---------	--

N-Cadherin - Protein Information**Name** CDH2Synonyms
Function

CDHN, NCAD
Calcium-dependent cell adhesion protein; preferentially mediates homotypic cell-cell adhesion by dimerization with a CDH2 chain from another cell. Cadherins may thus contribute to the sorting of heterogeneous cell types. Acts as a regulator of neural stem cells quiescence by mediating anchorage of neural stem cells to ependymocytes in the adult subependymal zone: upon cleavage by MMP24, CDH2-mediated anchorage is affected, leading to modulate neural stem cell quiescence. Plays a role in cell-to-cell junction formation between pancreatic beta cells and neural crest stem (NCS) cells, promoting the formation of processes by NCS cells (By similarity). Required for proper neurite branching. Required for pre- and postsynaptic

Cellular Location

organization (By similarity). CDH2 may be involved in neuronal recognition mechanism. In hippocampal neurons, may regulate dendritic spine density.

Cell membrane

{ECO:0000250|UniProtKB:P15116};

Single-pass type I membrane protein. Cell membrane, sarcolemma

{ECO:0000250|UniProtKB:P15116}. Cell

junction. Cell surface

{ECO:0000250|UniProtKB:P15116}. Cell

junction, desmosome

{ECO:0000250|UniProtKB:P15116}. Cell

junction, adherens junction

{ECO:0000250|UniProtKB:P15116}.

Note=Colocalizes with TMEM65 at the intercalated disk in cardiomyocytes.

Colocalizes with OBSCN at the intercalated disk and at sarcolemma in cardiomyocytes

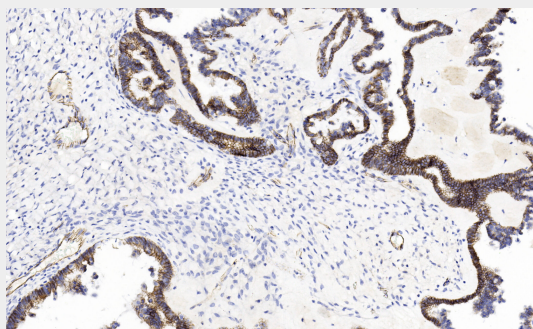
{ECO:0000250|UniProtKB:P15116}

N-Cadherin - Protocols

Provided below are standard protocols that you may find useful for product applications.

- [Western Blot](#)
- [Blocking Peptides](#)
- [Dot Blot](#)
- [Immunohistochemistry](#)
- [Immunofluorescence](#)
- [Immunoprecipitation](#)
- [Flow Cytometry](#)
- [Cell Culture](#)

N-Cadherin - Images



Ovarian carcinoma