

CD105
Rabbit Monoclonal antibody(Mab)
Catalog # AD80536**Specification**

CD105 - Product info

Application	IHC-P
Primary Accession	P17813
Reactivity	Human
Host	Rabbit
Clonality	Monoclonal
Calculated MW	70578

CD105 - Additional info

Gene ID	2022
Other Names	
Endoglin, CD105, ENG, END	

Dilution

IHC-P~~Ready-to-use

Storage**This product is stored at 2-50 °C, please use it within the expiration date.****CD105 - Protein Information****Name** ENGSynonyms
Function**END**

Vascular endothelium glycoprotein that plays an important role in the regulation of angiogenesis (PubMed:[21737454](#), PubMed:[23300529](#)). Required for normal structure and integrity of adult vasculature (PubMed:[7894484](#)). Regulates the migration of vascular endothelial cells (PubMed:[17540773](#)). Required for normal extraembryonic angiogenesis and for embryonic heart development (By similarity). May regulate endothelial cell shape changes in response to blood flow, which drive vascular remodeling and establishment of normal vascular morphology during angiogenesis (By similarity). May play a critical role in the binding of endothelial cells to integrins and/or other RGD receptors (PubMed:[1692830](#)). Acts as a TGF-beta

Cellular Location

Tissue Location

coreceptor and is involved in the TGF-beta/BMP signaling cascade that ultimately leads to the activation of SMAD transcription factors (PubMed:[8370410](#), PubMed:[21737454](#), PubMed:[22347366](#), PubMed:[23300529](#)). Required for GDF2/BMP9 signaling through SMAD1 in endothelial cells and modulates TGFB1 signaling through SMAD3 (PubMed:[21737454](#), PubMed:[22347366](#), PubMed:[23300529](#)).

Cell membrane; Single-pass type I membrane protein

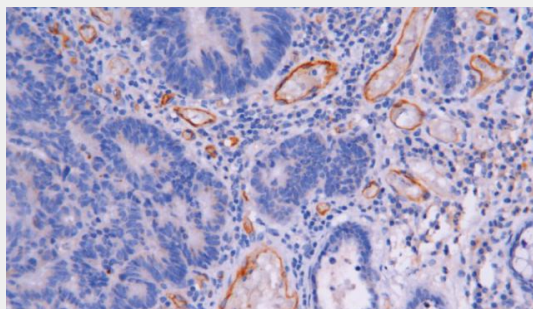
Detected on umbilical vein endothelial cells (PubMed:10625079). Detected in placenta (at protein level) (PubMed:1692830). Detected on endothelial cells (PubMed:1692830)

CD105 - Protocols

Provided below are standard protocols that you may find useful for product applications.

- [Western Blot](#)
- [Blocking Peptides](#)
- [Dot Blot](#)
- [Immunohistochemistry](#)
- [Immunofluorescence](#)
- [Immunoprecipitation](#)
- [Flow Cytometry](#)
- [Cell Culture](#)

CD105 - Images



Colon cancer