

**CREB Antibody (S129)**  
**Purified Rabbit Polyclonal Antibody (Pab)**  
**Catalog # AE1010a****Specification**

---

**CREB Antibody (S129) - Product Information**

Application	WB
Primary Accession	<a href="#">P16220</a>
Reactivity	Human, Mouse, Rat
Host	Rabbit
Clonality	Polyclonal
Concentration	1mg/ml
Isotype	Rabbit IgG
Calculated MW	35136

**CREB Antibody (S129) - Additional Information****Gene ID** 1385**Other Names**

Cyclic AMP-responsive element-binding protein 1, CREB-1, cAMP-responsive element-binding protein 1, CREB1

**Target/Specificity**

The antibody was affinity-purified from rabbit antiserum by affinity-chromatography using epitope-specific immunogen.

**Dilution**

WB~~1:500~1:1000

**Format**

affinity Purified IgG, in PBS, 0.02% sodium azide and 50% glycerol.

**Storage**

Maintain refrigerated at 2-8°C for up to 6 months. For long term storage store at -20°C in small aliquots to prevent freeze-thaw cycles.

**Precautions**

CREB Antibody (S129) is for research use only and not for use in diagnostic or therapeutic procedures.

**CREB Antibody (S129) - Protein Information****Name** CREB1**Function**

Phosphorylation-dependent transcription factor that stimulates transcription upon binding to the

DNA cAMP response element (CRE), a sequence present in many viral and cellular promoters (By similarity). Transcription activation is enhanced by the TORC coactivators which act independently of Ser-119 phosphorylation (PubMed:<a href="http://www.uniprot.org/citations/14536081" target="\_blank">14536081</a>). Involved in different cellular processes including the synchronization of circadian rhythmicity and the differentiation of adipose cells (By similarity). Regulates the expression of apoptotic and inflammatory response factors in cardiomyocytes in response to ERFE-mediated activation of AKT signaling (By similarity).

#### Cellular Location

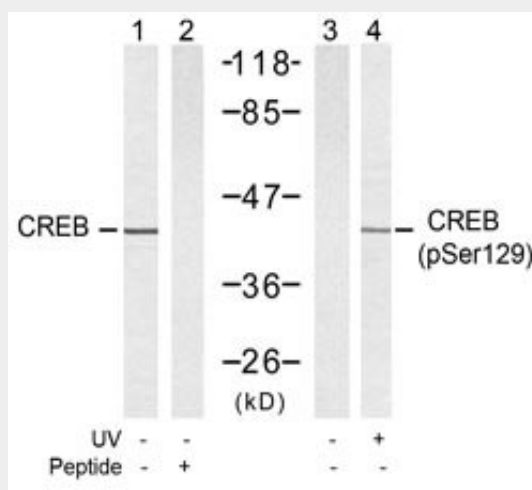
Nucleus {ECO:0000255|PROSITE-ProRule:PRU00312, ECO:0000255|PROSITE-ProRule:PRU00978, ECO:0000269|PubMed:12552083}

### CREB Antibody (S129) - Protocols

Provided below are standard protocols that you may find useful for product applications.

- [Western Blot](#)
- [Blocking Peptides](#)
- [Dot Blot](#)
- [Immunohistochemistry](#)
- [Immunofluorescence](#)
- [Immunoprecipitation](#)
- [Flow Cytometry](#)
- [Cell Culture](#)

### CREB Antibody (S129) - Images



Western blot analysis of extracts from 293 cells untreated or treated with UV, using CREB Antibody (S129) (#AE1010a, Lane 1 and 2) and Phospho-CREB-S129 Antibody (#AE1010c, Lane 3 and 4).

### CREB Antibody (S129) - Background

This gene encodes a transcription factor that is a member of the leucine zipper family of DNA binding proteins. This protein binds as a homodimer to the cAMP-responsive element, an octameric palindrome. The protein is phosphorylated by several protein kinases, and induces transcription of genes in response to hormonal stimulation of the cAMP pathway. Alternate splicing of this gene results in two transcript variants encoding different isoforms.

**CREB Antibody (S129) - References**

COMMON VARIANTS IN 40 GENES ASSESSED FOR DIABETES INCIDENCE AND RESPONSE TO METFORMIN AND LIFESTYLE INTERVENTIONS IN THE DIABETES PREVENTION PROGRAM. Jablonski KA, et al. Diabetes, 2010 Aug 3. PMID 20682687.

A preliminary investigation of the influence of CREB1 gene on treatment resistance in major depression. Serretti A, et al. J Affect Disord, 2010 Jul 17. PMID 20643483.

Variation at the NFATC2 Locus Increases the Risk of Thiazolinedinedione-Induced Edema in the Diabetes REduction Assessment with ramipril and rosiglitazone Medication (DREAM) Study. Bailey SD, et al. Diabetes Care, 2010 Jul 13. PMID 20628086.

cAMP-response-element-binding protein positively regulates breast cancer metastasis and subsequent bone destruction. Son J, et al. Biochem Biophys Res Commun, 2010 Jul 23. PMID 20599715.

GSK-3 promotes conditional association of CREB and its coactivators with MEIS1 to facilitate HOX-mediated transcription and oncogenesis. Wang Z, et al. Cancer Cell, 2010 Jun 15. PMID 20541704.