

GATA1 Antibody (S142)
Purified Rabbit Polyclonal Antibody (Pab)
Catalog # AE1013a**Specification**

GATA1 Antibody (S142) - Product Information

| | |
|-------------------|------------------------|
| Application | WB, IHC, IF |
| Primary Accession | P15976 |
| Reactivity | Human, Mouse, Rat |
| Host | Rabbit |
| Clonality | Polyclonal |
| Concentration | 1mg/ml |
| Isotype | Rabbit IgG |
| Calculated MW | 42751 |

GATA1 Antibody (S142) - Additional Information**Gene ID** 2623**Other Names**

Erythroid transcription factor, Eryf1, GATA-binding factor 1, GATA-1, GF-1, NF-E1 DNA-binding protein, GATA1, ERYF1, GF1

Target/Specificity

The antibody was affinity-purified from rabbit antiserum by affinity-chromatography using epitope-specific immunogen.

Dilution

WB~~1:500~1:1000

IHC~~1:50~1:100

IF~~1:100~200

Format

affinity Purified IgG, in PBS, 0.02% sodium azide and 50% glycerol.

Storage

Maintain refrigerated at 2-8°C for up to 6 months. For long term storage store at -20°C in small aliquots to prevent freeze-thaw cycles.

Precautions

GATA1 Antibody (S142) is for research use only and not for use in diagnostic or therapeutic procedures.

GATA1 Antibody (S142) - Protein Information**Name** GATA1

Synonyms ERYF1, GF1**Function**

Transcriptional activator or repressor which serves as a general switch factor for erythroid development (PubMed: [35030251](http://www.uniprot.org/citations/35030251)). It binds to DNA sites with the consensus sequence 5'-[AT]GATA[AG]-3' within regulatory regions of globin genes and of other genes expressed in erythroid cells. Activates the transcription of genes involved in erythroid differentiation of K562 erythroleukemia cells, including HBB, HBG1/2, ALAS2 and HMBS (PubMed: [24245781](http://www.uniprot.org/citations/24245781)).

Cellular Location

Nucleus.

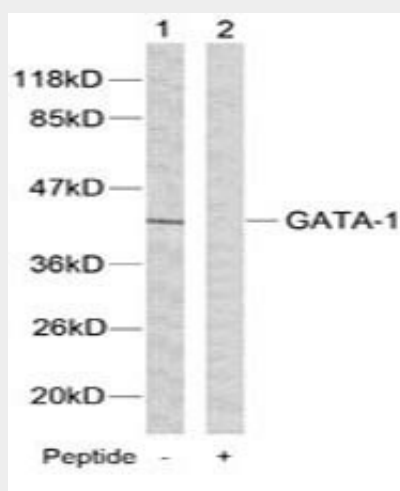
Tissue Location

Erythrocytes..

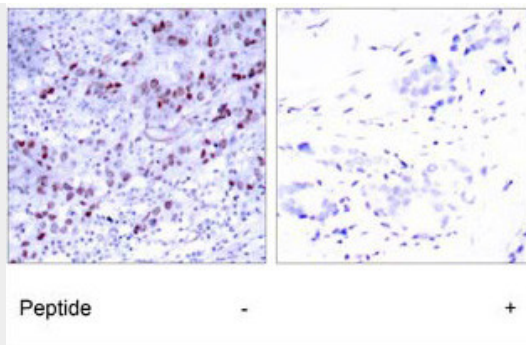
GATA1 Antibody (S142) - Protocols

Provided below are standard protocols that you may find useful for product applications.

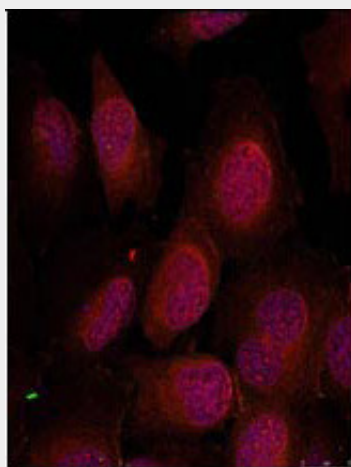
- [Western Blot](#)
- [Blocking Peptides](#)
- [Dot Blot](#)
- [Immunohistochemistry](#)
- [Immunofluorescence](#)
- [Immunoprecipitation](#)
- [Flow Cytometry](#)
- [Cell Culture](#)

GATA1 Antibody (S142) - Images

Western blot analysis of extracts from K562 cells using GATA1 Antibody (S142) (#AE1013a).



Immunohistochemical analysis of paraffin-embedded human breast carcinoma tissue using GATA1 Antibody (S142) (#AE1013a).



Immunofluorescence staining of methanol-fixed HeLa cells using GATA1 Antibody (S142) (#AE1013a, Red).

GATA1 Antibody (S142) - Background

This gene encodes a protein which belongs to the GATA family of transcription factors. The protein plays an important role in erythroid development by regulating the switch of fetal hemoglobin to adult hemoglobin. Mutations in this gene have been associated with X-linked dyserythropoietic anemia and thrombocytopenia.

GATA1 Antibody (S142) - References

Developmental stage-specific interplay of GATA1 and IGF signaling in fetal megakaryopoiesis and leukemogenesis. Klusmann JH, et al. *Genes Dev*, 2010 Aug 1. PMID 20679399.
HSP27 controls GATA-1 protein level during erythroid cell differentiation. de Thonel A, et al. *Blood*, 2010 Jul 8. PMID 20410505.
Down-regulation of GATA1 uncouples STAT5-induced erythroid differentiation from stem/progenitor cell proliferation. Wierenga AT, et al. *Blood*, 2010 Jun 3. PMID 20339093.
Human promoter mutations unveil Oct-1 and GATA-1 opposite action on Gfi1b regulation. Hernández A, et al. *Ann Hematol*, 2010 Aug. PMID 20143233.
The transcription factor GATA-1 is overexpressed in breast carcinomas and contributes to survivin upregulation via a promoter polymorphism. Boidot R, et al. *Oncogene*, 2010 Apr 29. PMID 20101202.