

GATA1 Antibody (S310)
Purified Rabbit Polyclonal Antibody (Pab)
Catalog # AE1013b**Specification**

GATA1 Antibody (S310) - Product Information

Application	WB
Primary Accession	P15976
Reactivity	Human, Mouse, Rat
Host	Rabbit
Clonality	Polyclonal
Concentration	1mg/ml
Isotype	Rabbit IgG
Calculated MW	42751

GATA1 Antibody (S310) - Additional Information**Gene ID** 2623**Other Names**

Erythroid transcription factor, Eryf1, GATA-binding factor 1, GATA-1, GF-1, NF-E1 DNA-binding protein, GATA1, ERYF1, GF1

Target/Specificity

The antibody was affinity-purified from rabbit antiserum by affinity-chromatography using epitope-specific immunogen.

Dilution

WB~~1:500~1:1000

Format

affinity Purified IgG, in PBS, 0.02% sodium azide and 50% glycerol.

Storage

Maintain refrigerated at 2-8°C for up to 6 months. For long term storage store at -20°C in small aliquots to prevent freeze-thaw cycles.

Precautions

GATA1 Antibody (S310) is for research use only and not for use in diagnostic or therapeutic procedures.

GATA1 Antibody (S310) - Protein Information**Name** GATA1**Synonyms** ERYF1, GF1

Function

Transcriptional activator or repressor which serves as a general switch factor for erythroid development (PubMed:35030251). It binds to DNA sites with the consensus sequence 5'-[AT]GATA[AG]-3' within regulatory regions of globin genes and of other genes expressed in erythroid cells. Activates the transcription of genes involved in erythroid differentiation of K562 erythroleukemia cells, including HBB, HBG1/2, ALAS2 and HMBS (PubMed:24245781).

Cellular Location

Nucleus.

Tissue Location

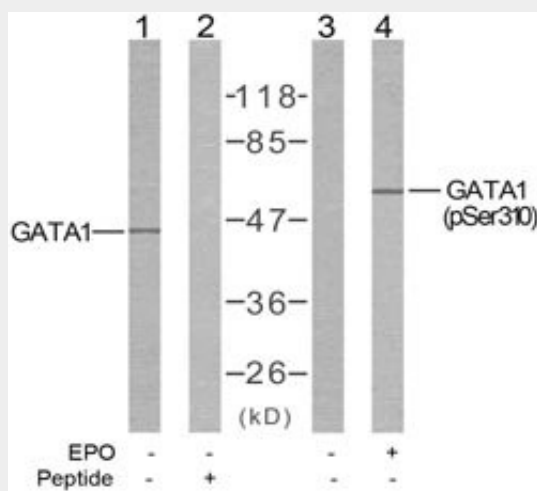
Erythrocytes..

GATA1 Antibody (S310) - Protocols

Provided below are standard protocols that you may find useful for product applications.

- [Western Blot](#)
- [Blocking Peptides](#)
- [Dot Blot](#)
- [Immunohistochemistry](#)
- [Immunofluorescence](#)
- [Immunoprecipitation](#)
- [Flow Cytometry](#)
- [Cell Culture](#)

GATA1 Antibody (S310) - Images



Western blot analysis of extracts from COS7 cells using GATA1 Antibody (S142) (#AE1013b, Line1 and 2) and Phospho-GATA1-S310 Antibody (#AE1013d, Line3 and 4).

GATA1 Antibody (S310) - Background

This gene encodes a protein which belongs to the GATA family of transcription factors. The protein plays an important role in erythroid development by regulating the switch of fetal hemoglobin to adult hemoglobin. Mutations in this gene have been associated with X-linked dyserythropoietic anemia and thrombocytopenia.

GATA1 Antibody (S310) - References

Developmental stage-specific interplay of GATA1 and IGF signaling in fetal megakaryopoiesis and leukemogenesis. Klusmann JH, et al. Genes Dev, 2010 Aug 1. PMID 20679399.

HSP27 controls GATA-1 protein level during erythroid cell differentiation. de Thonel A, et al. Blood, 2010 Jul 8. PMID 20410505.

Down-regulation of GATA1 uncouples STAT5-induced erythroid differentiation from stem/progenitor cell proliferation. Wierenga AT, et al. Blood, 2010 Jun 3. PMID 20339093.

Human promoter mutations unveil Oct-1 and GATA-1 opposite action on Gfi1b regulation.

Hernández A, et al. Ann Hematol, 2010 Aug. PMID 20143233.

The transcription factor GATA-1 is overexpressed in breast carcinomas and contributes to survivin upregulation via a promoter polymorphism. Boidot R, et al. Oncogene, 2010 Apr 29. PMID 20101202.