

Her3 (ErbB3) Antibody (Y1328)
Purified Rabbit Polyclonal Antibody (Pab)
Catalog # AE1015a**Specification**

Her3 (ErbB3) Antibody (Y1328) - Product Information

Application	WB, IHC, IF
Primary Accession	P21860
Reactivity	Human, Mouse, Rat
Host	Rabbit
Clonality	Polyclonal
Concentration	1mg/ml
Isotype	Rabbit IgG
Calculated MW	148098

Her3 (ErbB3) Antibody (Y1328) - Additional Information**Gene ID** 2065**Other Names**

Receptor tyrosine-protein kinase erbB-3, Proto-oncogene-like protein c-ErbB-3, Tyrosine kinase-type cell surface receptor HER3, ERBB3, HER3

Target/Specificity

The antibody was affinity-purified from rabbit antiserum by affinity-chromatography using epitope-specific immunogen.

Dilution

WB~~1:500~1:1000

IHC~~1:50~1:100

IF~~1:50~1:100

Format

affinity Purified IgG, in PBS, 0.02% sodium azide and 50% glycerol.

Storage

Maintain refrigerated at 2-8°C for up to 6 months. For long term storage store at -20°C in small aliquots to prevent freeze-thaw cycles.

Precautions

Her3 (ErbB3) Antibody (Y1328) is for research use only and not for use in diagnostic or therapeutic procedures.

Her3 (ErbB3) Antibody (Y1328) - Protein Information**Name** ERBB3

Synonyms HER3

Function

Tyrosine-protein kinase that plays an essential role as cell surface receptor for neuregulins. Binds to neuregulin-1 (NRG1) and is activated by it; ligand-binding increases phosphorylation on tyrosine residues and promotes its association with the p85 subunit of phosphatidylinositol 3-kinase (PubMed:20682778). May also be activated by CSPG5 (PubMed:15358134). Involved in the regulation of myeloid cell differentiation (PubMed:27416908).

Cellular Location

[Isoform 1]: Cell membrane; Single-pass type I membrane protein

Tissue Location

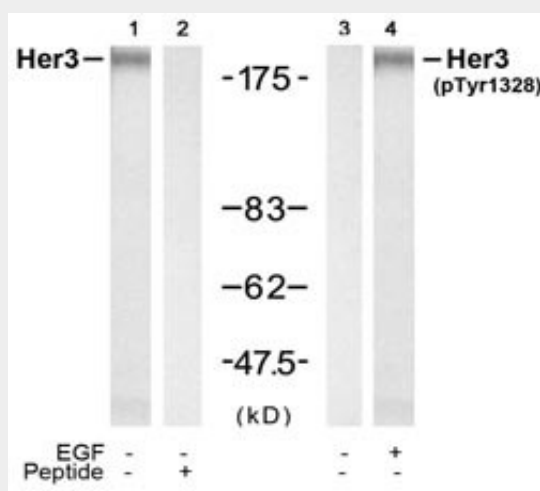
Epithelial tissues and brain.

Her3 (ErbB3) Antibody (Y1328) - Protocols

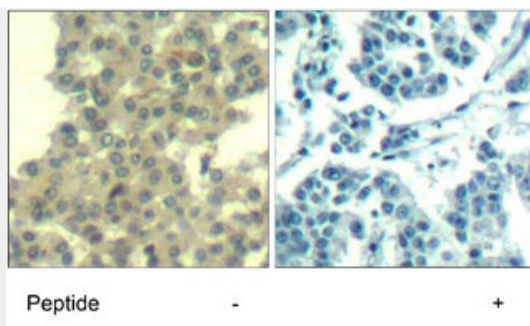
Provided below are standard protocols that you may find useful for product applications.

- [Western Blot](#)
- [Blocking Peptides](#)
- [Dot Blot](#)
- [Immunohistochemistry](#)
- [Immunofluorescence](#)
- [Immunoprecipitation](#)
- [Flow Cytometry](#)
- [Cell Culture](#)

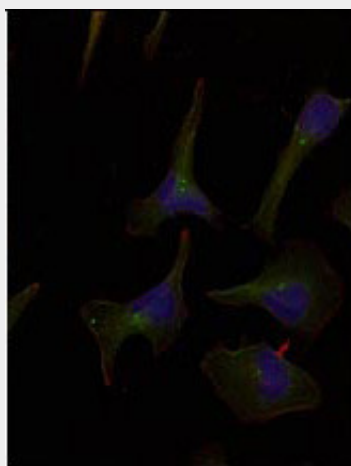
Her3 (ErbB3) Antibody (Y1328) - Images



Western blot analysis of extracts from HUVEC cell using Her3 (ErbB3) Antibody (Y1328) (#AE1015a, Lane 1 and 2) and Phospho-Her3 (ErbB3)-Y1328 Antibody (#AE1015b, Lane 3 and 4).



Immunohistochemical analysis of paraffin-embedded human breast carcinoma tissue using Her3 (ErbB3) Antibody (Y1328) (#AE1015a).



Immunofluorescence staining of methanol-fixed HeLa cells using Her3 (ErbB3) Antibody (Y1328) (#AE1015a, Red).

Her3 (ErbB3) Antibody (Y1328) - Background

This gene encodes a member of the epidermal growth factor receptor (EGFR) family of receptor tyrosine kinases. This membrane-bound protein has a neuregulin binding domain but not an active kinase domain. It therefore can bind this ligand but not convey the signal into the cell through protein phosphorylation. However, it does form heterodimers with other EGF receptor family members which do have kinase activity. Heterodimerization leads to the activation of pathways which lead to cell proliferation or differentiation. Amplification of this gene and/or overexpression of its protein have been reported in numerous cancers, including prostate, bladder, and breast tumors. Alternate transcriptional splice variants encoding different isoforms have been characterized. One isoform lacks the intermembrane region and is secreted outside the cell. This form acts to modulate the activity of the membrane-bound form. Additional splice variants have also been reported, but they have not been thoroughly characterized.

Her3 (ErbB3) Antibody (Y1328) - References

Investigation of type 1 diabetes and coeliac disease susceptibility loci for association with juvenile idiopathic arthritis. Hinks A, et al. Ann Rheum Dis, 2010 Jul 20. PMID 20647273. Evaluation of candidate stromal epithelial cross-talk genes identifies association between risk of serous ovarian cancer and TERT, a cancer susceptibility hot-spot. Johnatty SE, et al. PLoS Genet, 2010 Jul 8. PMID 20628624. Variation at the NFATC2 Locus Increases the Risk of Thiazolidinedione-Induced Edema in the Diabetes REduction Assessment with ramipril and rosiglitazone Medication (DREAM) Study. Bailey SD, et al. Diabetes Care, 2010 Jul 13. PMID 20628086. Nr4p1-mediated regulation of ErbB3 expression by the androgen receptor in androgen-dependent but not castrate-resistant prostate cancer cells. Chen L, et al. Cancer Res, 2010 Jul 15. PMID 20587519. [Association of the

polymorphisms of the ERBB3 and SH2B3 genes with type 1 diabetes] Nikitin AG, et al. Mol Biol (Mosk), 2010 Mar-Apr. PMID 20586186.