

Goat Anti-14-3-3 tau / YWHAQ Antibody
Peptide-affinity purified goat antibody
Catalog # AF1001b**Specification**

Goat Anti-14-3-3 tau / YWHAQ Antibody - Product Information

Application	WB, E
Primary Accession	P27348
Other Accession	NP_006817 , 10971
Reactivity	Human
Predicted	Mouse, Rat, Dog
Host	Goat
Clonality	Polyclonal
Concentration	100ug/200ul
Isotype	IgG
Calculated MW	27764

Goat Anti-14-3-3 tau / YWHAQ Antibody - Additional Information**Gene ID** 10971**Other Names**

14-3-3 protein theta, 14-3-3 protein T-cell, 14-3-3 protein tau, Protein HS1, YWHAQ

Dilution

WB~~1:1000

E~~N/A

Format

0.5 mg IgG/ml in Tris saline (20mM Tris pH7.3, 150mM NaCl), 0.02% sodium azide, with 0.5% bovine serum albumin

Storage

Maintain refrigerated at 2-8°C for up to 6 months. For long term storage store at -20°C in small aliquots to prevent freeze-thaw cycles.

Precautions

Goat Anti-14-3-3 tau / YWHAQ Antibody is for research use only and not for use in diagnostic or therapeutic procedures.

Goat Anti-14-3-3 tau / YWHAQ Antibody - Protein Information**Name** YWHAQ**Function**

Adapter protein implicated in the regulation of a large spectrum of both general and specialized signaling pathways. Binds to a large number of partners, usually by recognition of a phosphoserine

or phosphothreonine motif. Binding generally results in the modulation of the activity of the binding partner. Negatively regulates the kinase activity of PDPK1.

Cellular Location

Cytoplasm. Note=In neurons, axonally transported to the nerve terminals

Tissue Location

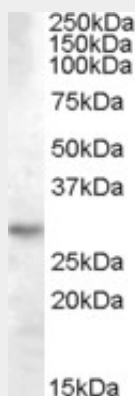
Abundantly expressed in brain, heart and pancreas, and at lower levels in kidney and placenta. Up-regulated in the lumbar spinal cord from patients with sporadic amyotrophic lateral sclerosis (ALS) compared with controls, with highest levels of expression in individuals with predominant lower motor neuron involvement

Goat Anti-14-3-3 tau / YWHAQ Antibody - Protocols

Provided below are standard protocols that you may find useful for product applications.

- [Western Blot](#)
- [Blocking Peptides](#)
- [Dot Blot](#)
- [Immunohistochemistry](#)
- [Immunofluorescence](#)
- [Immunoprecipitation](#)
- [Flow Cytometry](#)
- [Cell Culture](#)

Goat Anti-14-3-3 tau / YWHAQ Antibody - Images



AF1001b (0.03 µg/ml) staining of Human Brain (Hippocampus) lysate (35 µg protein in RIPA buffer). Primary incubation was 1 hour. Detected by chemiluminescence.

Goat Anti-14-3-3 tau / YWHAQ Antibody - Background

This gene product belongs to the 14-3-3 family of proteins which mediate signal transduction by binding to phosphoserine-containing proteins. This highly conserved protein family is found in both plants and mammals, and this protein is 99% identical to the mouse and rat orthologs. This gene is upregulated in patients with amyotrophic lateral sclerosis. It contains in its 5' UTR a 6 bp tandem repeat sequence which is polymorphic, however, there is no correlation between the repeat number and the disease.

Goat Anti-14-3-3 tau / YWHAQ Antibody - References

Aurora B and 14-3-3 coordinately regulate clustering of centralspindlin during cytokinesis. Douglas

ME, et al. Curr Biol, 2010 May 25. PMID 20451386.

The expression of seven 14-3-3 isoforms in human meningioma. Liu Y, et al. Brain Res, 2010 Jun 8. PMID 20388496.

The PX-RICS-14-3-3zeta/theta complex couples N-cadherin-beta-catenin with dynein-dynactin to mediate its export from the endoplasmic reticulum. Nakamura T, et al. J Biol Chem, 2010 May 21. PMID 20308060.

Protein phosphatase 2A reactivates FOXO3a through a dynamic interplay with 14-3-3 and AKT.

Singh A, et al. Mol Biol Cell, 2010 Mar. PMID 20110348.

14-3-3Tau regulates ubiquitin-independent proteasomal degradation of p21, a novel mechanism of p21 downregulation in breast cancer. Wang B, et al. Mol Cell Biol, 2010 Mar. PMID 20086099.