

**Goat Anti-ADAM12 Antibody**  
**Peptide-affinity purified goat antibody**  
**Catalog # AF1025a****Specification**

---

**Goat Anti-ADAM12 Antibody - Product Information**

Application	WB, IHC, E
Primary Accession	<a href="#">O43184</a>
Other Accession	<a href="#">NP_067673</a> , <a href="#">8038</a>
Reactivity	Human
Host	Goat
Clonality	Polyclonal
Concentration	0.5 mg/ml
Isotype	IgG
Calculated MW	99542

**Goat Anti-ADAM12 Antibody - Additional Information****Gene ID** 8038**Other Names**

Disintegrin and metalloproteinase domain-containing protein 12, ADAM 12, 3.4.24.-, Meltrin-alpha, ADAM12, MLTN

**Dilution**WB~~1:1000  
IHC~~1:100~500  
E~~N/A**Format**

0.5 mg IgG/ml in Tris saline (20mM Tris pH7.3, 150mM NaCl), 0.02% sodium azide, with 0.5% bovine serum albumin

**Storage**

Maintain refrigerated at 2-8°C for up to 6 months. For long term storage store at -20°C in small aliquots to prevent freeze-thaw cycles.

**Precautions**

Goat Anti-ADAM12 Antibody is for research use only and not for use in diagnostic or therapeutic procedures.

**Goat Anti-ADAM12 Antibody - Protein Information****Name** ADAM12**Synonyms** MLTN

**Function**

Involved in skeletal muscle regeneration, specifically at the onset of cell fusion. Also involved in macrophage-derived giant cells (MGC) and osteoclast formation from mononuclear precursors (By similarity).

**Cellular Location**

[Isoform 1]: Cell membrane; Single-pass type I membrane protein [Isoform 3]: Secreted.

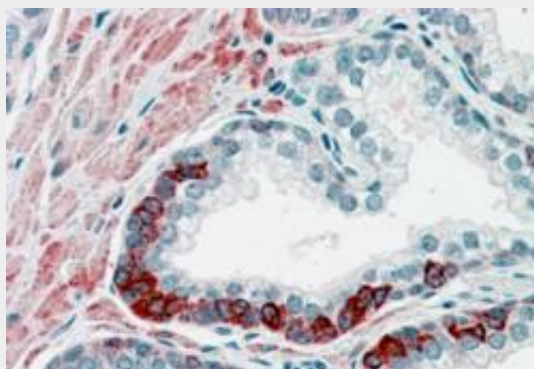
**Tissue Location**

Isoform 1 is expressed in placenta and skeletal, cardiac, and smooth muscle. Isoform 2 seems to be expressed only in placenta or in embryo and fetus. Both forms were expressed in some tumor cells lines. Not detected in brain, lung, liver, kidney or pancreas

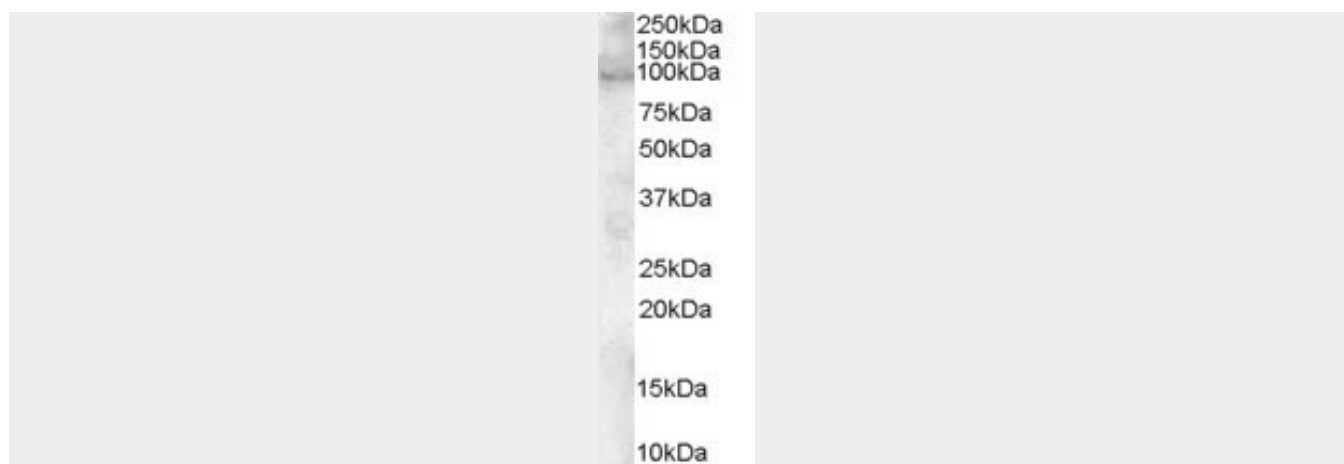
**Goat Anti-ADAM12 Antibody - Protocols**

Provided below are standard protocols that you may find useful for product applications.

- [Western Blot](#)
- [Blocking Peptides](#)
- [Dot Blot](#)
- [Immunohistochemistry](#)
- [Immunofluorescence](#)
- [Immunoprecipitation](#)
- [Flow Cytometry](#)
- [Cell Culture](#)

**Goat Anti-ADAM12 Antibody - Images**

AF1025a (3.8 µg/ml) staining of paraffin embedded Human Prostate. Steamed antigen retrieval with citrate buffer pH 6, AP-staining.



AF1025a staining (0.1 µg/ml) of human heart lysate (RIPA buffer, 30 µg total protein per lane). Primary incubated for 1 hour. Detected by western blot using chemiluminescence.

#### **Goat Anti-ADAM12 Antibody - Background**

This gene encodes a member of the ADAM (a disintegrin and metalloprotease) protein family. Members of this family are membrane-anchored proteins structurally related to snake venom disintegrins, and have been implicated in a variety of biological processes involving cell-cell and cell-matrix interactions, including fertilization, muscle development, and neurogenesis. This gene has two alternatively spliced transcripts: a shorter secreted form and a longer membrane-bound form. The shorter form is found to stimulate myogenesis.

#### **Goat Anti-ADAM12 Antibody - References**

ADAM12 is an effective marker in the second trimester of pregnancy for prenatal screening of Down syndrome. Wang M, et al. Prenat Diagn, 2010 Jun. PMID 20509157. ADAM-12 stability in first trimester maternal serum. Cowans NJ, et al. Prenat Diagn, 2010 Jun. PMID 20509156. The role of SnoN in transforming growth factor beta1-induced expression of metalloprotease-disintegrin ADAM12. Solomon E, et al. J Biol Chem, 2010 Jul 16. PMID 20457602. Personalized smoking cessation: interactions between nicotine dose, dependence and quit-success genotype score. Rose JE, et al. Mol Med, 2010 Jul-Aug. PMID 20379614. Reduced density of ADAM 12-immunoreactive oligodendrocytes in the anterior cingulate white matter of patients with schizophrenia. Farkas N, et al. World J Biol Psychiatry, 2010 Apr. PMID 20218926.

#### **Goat Anti-ADAM12 Antibody - Citations**

- [Expression of ADAM12 is regulated by E2F1 in small cell lung cancer.](#)