

Goat Anti-Alpha2-antiplasmin Antibody
Peptide-affinity purified goat antibody
Catalog # AF1054a**Specification**

Goat Anti-Alpha2-antiplasmin Antibody - Product Information

Application	WB, IHC, IF, FC, Pep-ELISA
Primary Accession	P08697
Other Accession	NP_000925 , 5345
Reactivity	Human
Host	Goat
Clonality	Polyclonal
Concentration	100ug/200ul
Isotype	IgG
Calculated MW	54566

Goat Anti-Alpha2-antiplasmin Antibody - Additional Information**Gene ID** 5345**Other Names**

Alpha-2-antiplasmin, Alpha-2-AP, Alpha-2-plasmin inhibitor, Alpha-2-PI, Serpin F2, SERPINF2, AAP, PLI

DilutionWB~~1:1000
IHC~~1:100~500
IF~~1:50~200
FC~~1:10~50
Pep-ELISA~~N/A**Format**

0.5 mg IgG/ml in Tris saline (20mM Tris pH7.3, 150mM NaCl), 0.02% sodium azide, with 0.5% bovine serum albumin

Storage

Maintain refrigerated at 2-8°C for up to 6 months. For long term storage store at -20°C in small aliquots to prevent freeze-thaw cycles.

Precautions

Goat Anti-Alpha2-antiplasmin Antibody is for research use only and not for use in diagnostic or therapeutic procedures.

Goat Anti-Alpha2-antiplasmin Antibody - Protein Information**Name** SERPINF2

Synonyms AAP, PLI

Function

Serine protease inhibitor. The major targets of this inhibitor are plasmin and trypsin, but it also inactivates matrilysin- 3/TMPRSS7 and chymotrypsin.

Cellular Location

Secreted.

Tissue Location

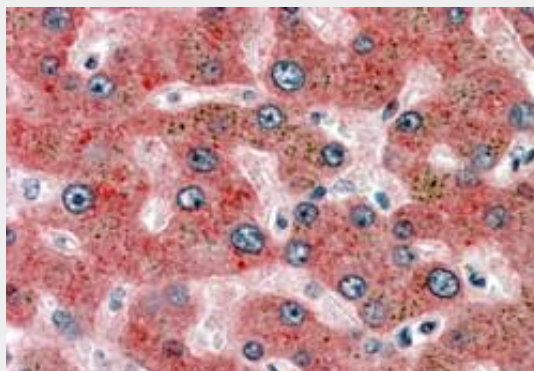
Expressed by the liver and secreted in plasma.

Goat Anti-Alpha2-antiplasmin Antibody - Protocols

Provided below are standard protocols that you may find useful for product applications.

- [Western Blot](#)
- [Blocking Peptides](#)
- [Dot Blot](#)
- [Immunohistochemistry](#)
- [Immunofluorescence](#)
- [Immunoprecipitation](#)
- [Flow Cytometry](#)
- [Cell Culture](#)

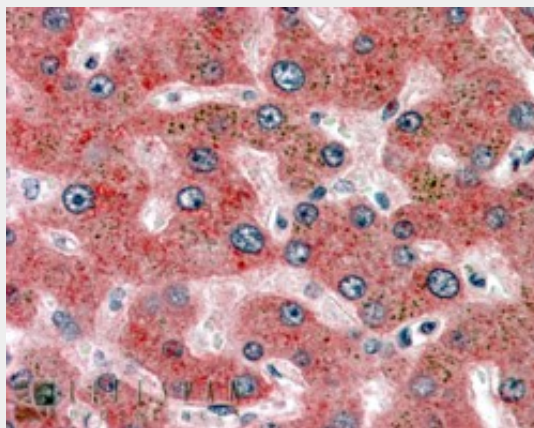
Goat Anti-Alpha2-antiplasmin Antibody - Images



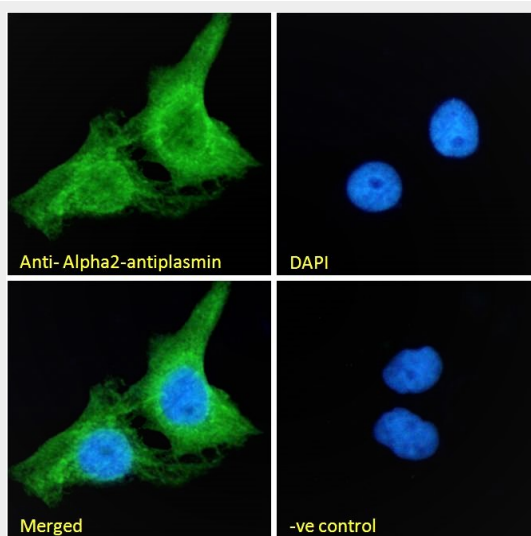
AF1054a (3.8 µg/ml) staining of paraffin embedded Human Liver. Steamed antigen retrieval with citrate buffer pH 6, AP-staining.

250kDa
150kDa
100kDa
75kDa
50kDa
37kDa
25kDa
20kDa
15kDa

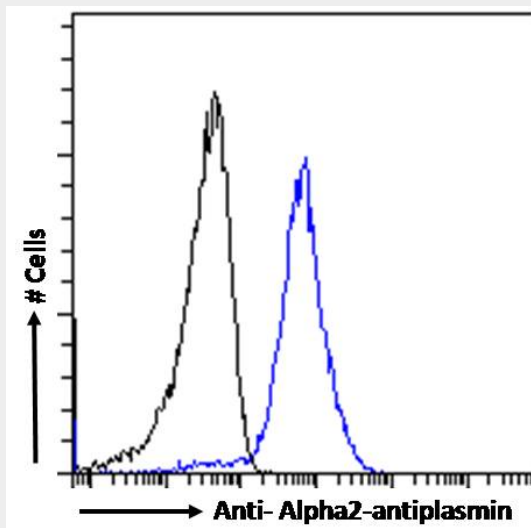
EB08777 (0.1 μ g/ml) staining of HepG2 cell lysate (35 μ g protein in RIPA buffer). Detected by chemiluminescence.



EB08777 (3.8 μ g/ml) staining of paraffin embedded Human Liver. Steamed antigen retrieval with citrate buffer pH 6, AP-staining.



EB08777 Immunofluorescence analysis of paraformaldehyde fixed A431 cells, permeabilized with 0.15% Triton. Primary incubation 1hr (10 μ g/ml) followed by Alexa Fluor 488 secondary antibody (2 μ g/ml), showing cytoplasmic staining. The nuclear stain is DAPI (b



EB08777 Flow cytometric analysis of paraformaldehyde fixed A431 cells (blue line), permeabilized with 0.5% Triton. Primary incubation 1hr (10ug/ml) followed by Alexa Fluor 488 secondary antibody (1ug/ml). IgG control: Unimmunized goat IgG (black line) fol

Goat Anti-Alpha2-antiplasmin Antibody - Background

This gene encodes a member of the serpin family of serine protease inhibitors. The protein is a major inhibitor of plasmin, which degrades fibrin and various other proteins. Consequently, the proper function of this gene has a major role in regulating the blood clotting pathway. Mutations in this gene result in alpha-2-plasmin inhibitor deficiency, which is characterized by severe hemorrhagic diathesis. Multiple transcript variants encoding different isoforms have been found for this gene.

Goat Anti-Alpha2-antiplasmin Antibody - References

Variation at the NFATC2 Locus Increases the Risk of Thiazolinedione-Induced Edema in the Diabetes REduction Assessment with ramipril and rosiglitazone Medication (DREAM) Study. Bailey SD, et al. Diabetes Care, 2010 Jul 13. PMID 20628086.

The human alpha(2)-plasmin inhibitor: functional characterization of the unique plasmin(ogen)-binding region. Gerber SS, et al. Cell Mol Life Sci, 2010 May. PMID 20112045.

Osteopontin is cleaved at multiple sites close to its integrin-binding motifs in milk and is a novel substrate for plasmin and cathepsin D. Christensen B, et al. J Biol Chem, 2010 Mar 12. PMID 20071328.

Gene-centric association signals for lipids and apolipoproteins identified via the HumanCVD BeadChip. Talmud PJ, et al. Am J Hum Genet, 2009 Nov. PMID 19913121.

A non-reactive glutamine residue of alpha2-antiplasmin promotes interactions with the factor XIII active site region. Cleary DB, et al. J Thromb Haemost, 2009 Nov. PMID 19691486.