

Goat Anti-APOL3 Antibody
Peptide-affinity purified goat antibody
Catalog # AF1085a

Specification

Goat Anti-APOL3 Antibody - Product Information

Application	WB, E
Primary Accession	O95236
Other Accession	NP_663616 , 80833
Reactivity	Human
Host	Goat
Clonality	Polyclonal
Concentration	100ug/200ul
Isotype	IgG
Calculated MW	44278

Goat Anti-APOL3 Antibody - Additional Information

Gene ID 80833

Other Names

Apolipoprotein L3, Apolipoprotein L-III, ApoL-III, TNF-inducible protein CG12-1, CG12_1, APOL3

Dilution

WB~~1:1000

E~~N/A

Format

0.5 mg IgG/ml in Tris saline (20mM Tris pH7.3, 150mM NaCl), 0.02% sodium azide, with 0.5% bovine serum albumin

Storage

Maintain refrigerated at 2-8°C for up to 6 months. For long term storage store at -20°C in small aliquots to prevent freeze-thaw cycles.

Precautions

Goat Anti-APOL3 Antibody is for research use only and not for use in diagnostic or therapeutic procedures.

Goat Anti-APOL3 Antibody - Protein Information

Name APOL3

Function

May affect the movement of lipids in the cytoplasm or allow the binding of lipids to organelles.

Cellular Location

Cytoplasm.

Tissue Location

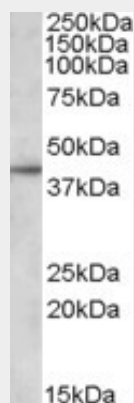
Widely expressed; the highest levels are in prostate, lung and placenta; also detected in kidney, bone marrow, spleen, thymus, spinal cord, adrenal gland, salivary gland, trachea and mammary gland; levels are low in brain, heart, fetal liver, pancreas and testis

Goat Anti-APOL3 Antibody - Protocols

Provided below are standard protocols that you may find useful for product applications.

- [Western Blot](#)
- [Blocking Peptides](#)
- [Dot Blot](#)
- [Immunohistochemistry](#)
- [Immunofluorescence](#)
- [Immunoprecipitation](#)
- [Flow Cytometry](#)
- [Cell Culture](#)

Goat Anti-APOL3 Antibody - Images



AF1085a (1 µg/ml) staining of DAUDI lysate (35 µg protein in RIPA buffer). Primary incubation was 1 hour. Detected by chemiluminescence.

Goat Anti-APOL3 Antibody - Background

This gene is a member of the apolipoprotein L gene family, and it is present in a cluster with other family members on chromosome 6. The encoded protein is found in the cytoplasm, where it may affect the movement of lipids, including cholesterol, and/or allow the binding of lipids to organelles. In addition, expression of this gene is up-regulated by tumor necrosis factor-alpha in endothelial cells lining the normal and atherosclerotic iliac artery and aorta. Alternative splicing results in multiple transcript variants.

Goat Anti-APOL3 Antibody - References

Family-based association analysis of 42 hereditary prostate cancer families identifies the Apolipoprotein L3 region on chromosome 22q12 as a risk locus. Johanneson B, et al. Hum Mol Genet, 2010 Oct 1. PMID 20631155.

Physiogenomic analysis of statin-treated patients: domain-specific counter effects within the ACACB gene on low-density lipoprotein cholesterol? Ruaño G, et al. Pharmacogenomics, 2010 Jul. PMID

20602615.

Personalized smoking cessation: interactions between nicotine dose, dependence and quit-success genotype score. Rose JE, et al. *Mol Med*, 2010 Jul-Aug. PMID 20379614.

New genetic associations detected in a host response study to hepatitis B vaccine. Davila S, et al. *Genes Immun*, 2010 Apr. PMID 20237496.

Identifying leukocyte gene expression patterns associated with plasma lipid levels in human subjects. Ma J, et al. *Atherosclerosis*, 2007 Mar. PMID 16806233.