

**Goat Anti-ASRGL1 / ALP Antibody**  
**Peptide-affinity purified goat antibody**  
**Catalog # AF1121a****Specification**

---

**Goat Anti-ASRGL1 / ALP Antibody - Product Information**

Application	WB, E
Primary Accession	<a href="#">Q7L266</a>
Other Accession	<a href="#">NP_079356</a> , <a href="#">80150</a>
Reactivity	Human
Host	Goat
Clonality	Polyclonal
Concentration	100ug/200ul
Isotype	IgG
Calculated MW	32055

**Goat Anti-ASRGL1 / ALP Antibody - Additional Information****Gene ID** 80150**Other Names**

Isoaspartyl peptidase/L-asparaginase, 3.4.19.5, 3.5.1.1, Asparaginase-like protein 1, Beta-aspartyl-peptidase, Isoaspartyl dipeptidase, L-asparagine amidohydrolase, Isoaspartyl peptidase/L-asparaginase alpha chain, Isoaspartyl peptidase/L-asparaginase beta chain, ASRGL1, ALP, CRASH

**Dilution**

WB~~1:1000

E~~N/A

**Format**

0.5 mg IgG/ml in Tris saline (20mM Tris pH7.3, 150mM NaCl), 0.02% sodium azide, with 0.5% bovine serum albumin

**Storage**

Maintain refrigerated at 2-8°C for up to 6 months. For long term storage store at -20°C in small aliquots to prevent freeze-thaw cycles.

**Precautions**

Goat Anti-ASRGL1 / ALP Antibody is for research use only and not for use in diagnostic or therapeutic procedures.

**Goat Anti-ASRGL1 / ALP Antibody - Protein Information****Name** ASRGL1**Synonyms** ALP, CRASH

**Function**

Has both L-asparaginase and beta-aspartyl peptidase activity. May be involved in the production of L-aspartate, which can act as an excitatory neurotransmitter in some brain regions. Is highly active with L-Asp beta-methyl ester. Besides, has catalytic activity toward beta-aspartyl dipeptides and their methyl esters, including beta-L-Asp- L-Phe, beta-L-Asp-L-Phe methyl ester (aspartame), beta-L-Asp-L-Ala, beta-L-Asp-L-Leu and beta-L-Asp-L-Lys. Does not have aspartylglucosaminidase activity and is inactive toward GlcNAc-L-Asn. Likewise, has no activity toward glutamine.

**Cellular Location**

Cytoplasm. Note=Midpiece of sperm tail

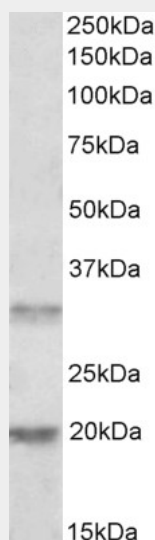
**Tissue Location**

Expressed in brain, kidney, testis and tissues of the gastrointestinal tract. Present in sperm (at protein level). Over- expressed in uterine, mammary, prostatic and ovarian carcinoma

**Goat Anti-ASRGL1 / ALP Antibody - Protocols**

Provided below are standard protocols that you may find useful for product applications.

- [Western Blot](#)
- [Blocking Peptides](#)
- [Dot Blot](#)
- [Immunohistochemistry](#)
- [Immunofluorescence](#)
- [Immunoprecipitation](#)
- [Flow Cytometry](#)
- [Cell Culture](#)

**Goat Anti-ASRGL1 / ALP Antibody - Images**

AF1121a (0.5 µg/ml) staining of Human Tonsil lysate (35 µg protein in RIPA buffer). Primary incubation was 1 hour. Detected by chemiluminescence.

**Goat Anti-ASRGL1 / ALP Antibody - References**

The human asparaginase-like protein 1 hASRGL1 is an Ntn hydrolase with beta-aspartyl peptidase activity. Cantor JR, et al. Biochemistry, 2009 Nov 24. PMID 19839645.

Cell growth stimulation by CRASH, an asparaginase-like protein overexpressed in human tumors and metastatic breast cancers. Weidle UH, et al. Anticancer Res, 2009 Apr. PMID 19414332.

Identification of genes related to Parkinson's disease using expressed sequence tags. Kim JM, et al. DNA Res, 2006 Dec 31. PMID 17213182.

Diversification of transcriptional modulation: large-scale identification and characterization of putative alternative promoters of human genes. Kimura K, et al. Genome Res, 2006 Jan. PMID 16344560.

Sequence comparison of human and mouse genes reveals a homologous block structure in the promoter regions. Suzuki Y, et al. Genome Res, 2004 Sep. PMID 15342556.