

Goat Anti-BCL7A Antibody
Peptide-affinity purified goat antibody
Catalog # AF1147a**Specification**

Goat Anti-BCL7A Antibody - Product Information

Application	WB, E
Primary Accession	Q4VC05
Other Accession	NP_001019979 , 605 , 77045 (mouse)
Reactivity	Human
Predicted	Mouse, Rat, Pig, Dog
Host	Goat
Clonality	Polyclonal
Concentration	100ug/200ul
Isotype	IgG
Calculated MW	22810

Goat Anti-BCL7A Antibody - Additional Information**Gene ID** 605**Other Names**

B-cell CLL/lymphoma 7 protein family member A, BCL7A

Dilution

WB~~1:1000

E~~N/A

Format

0.5 mg IgG/ml in Tris saline (20mM Tris pH7.3, 150mM NaCl), 0.02% sodium azide, with 0.5% bovine serum albumin

Storage

Maintain refrigerated at 2-8°C for up to 6 months. For long term storage store at -20°C in small aliquots to prevent freeze-thaw cycles.

Precautions

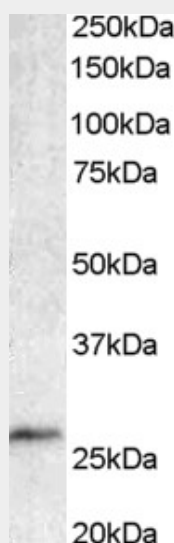
Goat Anti-BCL7A Antibody is for research use only and not for use in diagnostic or therapeutic procedures.

Goat Anti-BCL7A Antibody - Protein Information**Name** BCL7A**Goat Anti-BCL7A Antibody - Protocols**

Provided below are standard protocols that you may find useful for product applications.

- [Western Blot](#)
- [Blocking Peptides](#)
- [Dot Blot](#)
- [Immunohistochemistry](#)
- [Immunofluorescence](#)
- [Immunoprecipitation](#)
- [Flow Cytometry](#)
- [Cell Culture](#)

Goat Anti-BCL7A Antibody - Images



AF1147a staining (1 µg/ml) of Human Lymphnode lysate (RIPA buffer, 35 µg total protein per lane). Primary incubated for 1 hour. Detected by western blot using chemiluminescence.

Goat Anti-BCL7A Antibody - Background

This gene is directly involved, with Myc and IgH, in a three-way gene translocation in a Burkitt lymphoma cell line. As a result of the gene translocation, the N-terminal region of the gene product is disrupted, which is thought to be related to the pathogenesis of a subset of high-grade B cell non-Hodgkin lymphoma. The N-terminal segment involved in the translocation includes the region that shares a strong sequence similarity with those of BCL7B and BCL7C. Two transcript variants encoding different isoforms have been found for this gene.

Goat Anti-BCL7A Antibody - References

Association between genetic variants in VEGF, ERCC3 and occupational benzene haematotoxicity. Hosgood HD 3rd, et al. Occup Environ Med, 2009 Dec. PMID 19773279.

Common genetic variants in candidate genes and risk of familial lymphoid malignancies. Liang XS, et al. Br J Haematol, 2009 Aug. PMID 19573080.

Risk of non-Hodgkin lymphoma associated with germline variation in genes that regulate the cell cycle, apoptosis, and lymphocyte development. Morton LM, et al. Cancer Epidemiol Biomarkers Prev, 2009 Apr. PMID 19336552.

Array-based comparative genomic hybridization in early-stage mycosis fungoides: recurrent deletion of tumor suppressor genes BCL7A, SMAC/DIABLO, and RHOF. Carbone A, et al. Genes Chromosomes Cancer, 2008 Dec. PMID 18663754.

Epigenetic profiling of cutaneous T-cell lymphoma: promoter hypermethylation of multiple tumor

suppressor genes including BCL7a, PTPRG, and p73. van Doorn R, et al. J Clin Oncol, 2005 Jun 10. PMID 15897551.